

XX279-00-02

VN-KEYPAD for Valerus and ViconNet/VMDC

Vicon Industries Inc.

Tel: 631-952-2288 Fax: 631-951-2288 Toll Free: 800-645-9116
24-Hour Technical Support: 800-34-VICON (800-348-4266) UK: 44/(0) 1489-566300

Vicon Industries Inc. does not warrant that the functions contained in this equipment will meet your requirements or that the operation will be entirely error free or perform precisely as described in the documentation. This system has not been designed to be used in life-critical situations and must not be used for this purpose.

www.vicon-security.com

VN-KEYPAD Keypad for Valerus and ViconNet/VMDC Systems

Introduction

The information in this manual covers installation, programming and operation for the VN-KEYPAD. The installation procedures should only be performed by a qualified technician using approved materials in accordance with the national Electrical Code ANSI/NFPA 70, state and local wiring codes.

Note

Read all of the instructions completely before installing or operating this equipment

The VN-KEYPAD is a desk-top style multi-function system keypad designed to operate with Vicon's Valerus™ and ViconNet® Digital Video Management systems, including the Virtual Matrix Display Controller (allows ViconNet functioning to simulate as a traditional matrix control system). The keypad connects to Valerus, ViconNet or VMDC as a serial device via its USB cable.

The keypad provides for standard camera, monitor and preset setup and selections, as well as standard PTZ, lens, auxiliary relay, lens speed, autopan and autoiris controls. Macros can also be started and stopped. Additionally, the keypad provides access to multi-screen controls, Quick Playback and Pan-and-Tilt Speed. Refer to Figure 1.

Note

Feature set is dependent on the VMS it is being used with.

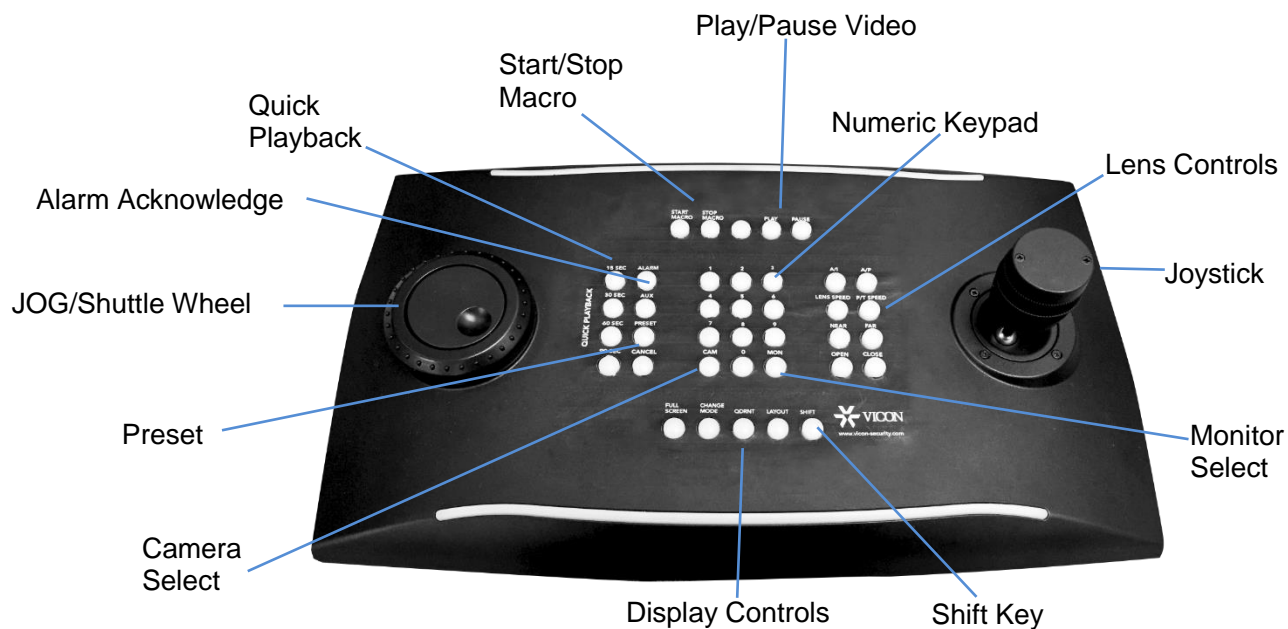


Figure 1
VN-KEYPAD

The controller employs a three function, proportional joystick for pan, tilt and zoom; focus and iris controls are available via pushbutton controls located next to the joystick. A Jog/Shuttle wheel allows precise control of video playback.

A standard numeric keypad, as well as camera select and monitor select buttons are provided. To the left of the numeric keypad is a set of function keys that allow for quick playback and control of alarm acknowledgement, preset setup and recall, and auxiliary relay operation. Layout provides how many sectors of video are displayed on the Main screen; a Full Screen button is provided. Quadrant (QDRNT) selects which video display tile is being controlled. The Change Mode button is used exclusively for VMDC to change from VMDC to ViconNet model. The Shift key is for advanced functions.

Refer to the documentation for the Valerus/ViconNet/VMDC control system for detailed information on each system.

Installation

The keypad connects to Valerus, ViconNet or VMDC as a serial device via its USB cable. Power is provided via this same USB. Simply insert the USB cable on the keypad into a USB slot on the Valerus/ViconNet/VMDC unit.

Modifying the Serial Port Number

The Windows OS allows for mapping of the serial ports. Regardless of the hardware configuration, each serial port can be assigned a COM number from 1 to 256.

When installing on Windows environment, the OS will automatically assign a port number which may not necessarily meet the needs of the user.

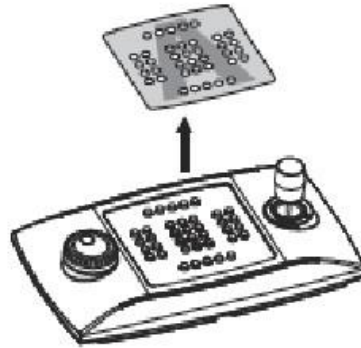
To change the serial port number:

1. Connect and install the VN-KEYPAD.
2. Go to the settings in **Control Panel/System/Hardware/ Device Manager**.
3. Scroll the list of peripherals and select **Ports (COM and LPT)**. The **USB CDC serial port emulation (COMx)** port corresponds to the VN-KEYPAD.
4. If there is no issue with the assigned number, close the dialog box. If a change is required, proceed to step 5.
5. Click on **Property** for the required port.
6. Go to **Port settings/Advanced** and change the port number in **COM port number**. Some ports may indicate they are **in use** by other devices, though this is not usually the case. If you select a port **in use**, check whether other devices (for instance an analog modem) are already using it.
7. Press Confirm and exit.
8. After changing the port number, the **Device Manager** tab may still indicate the old COM number.
9. Close the **Device Manager** tab and then re-open it to see if the number has been changed.

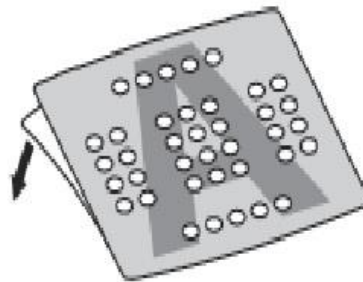
Installing the Upper Panel

The upper panel that denotes the button functions is supplied and may be affixed to the keypad or remain secured by the supplied clear plastic overlay. By default, the standard keypad is set for right-handed users, with the joystick on the right and the Jog/Shuttle on the left. This layout can be inverted to accommodate left-handed (joystick on the left) control. After the physical installation of the upper panel, perform simple procedure to reverse the functionality (Configuration section of this manual).

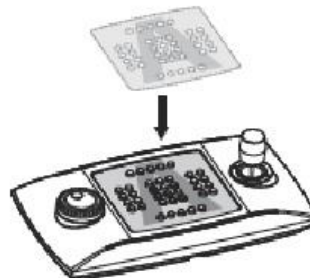
1. To affix the panel, remove the upper panel provided on the keypad buttons.



2. Remove the adhesive backing on the upper panel.



3. Affix the adhesive panel (right or left-handed orientation), making sure that it does not touch the keys. A protective clear plastic overlay is provided; place it over the buttons to shield the upper panel from wear and tear.



4. To confirm the layout and the operating mode, follow the selection procedure that follows in Configuration.

Configuration

Setup Options

A specific key press sequence allows users to enter the setup mode. This allows the user to:

- Set the keypad orientation (left- or right-handed users)
- Calibrate the joystick

Press the CLOSE, P/T SPEED and SHIFT keys and then release them in the reverse order (SHIFT, P/T SPEED, CLOSE). The keys will light up when setup has been accessed successfully.

To invert the keyboard function settings:

1. Enter setup and press the “MON” key. The keyboard will save the setting and return to its normal operating mode.
2. If not already done so, carefully remove the caption panel on the keypad. rotate it by 180° and replace it.
3. Adjust the feet on the bottom of the keyboard to obtain the inclination required.
4. Carefully remove the USB cable from the bottom of the keyboard and insert it in the serpentine, making sure it is not in the way of the operator.
5. The inversion of the keyboard does not require any changes to the PC application.
6. Repeating steps 1 - 5 will invert the keypad back to its former orientation.

The joystick can be calibrated if it malfunctions. To calibrate the joystick:

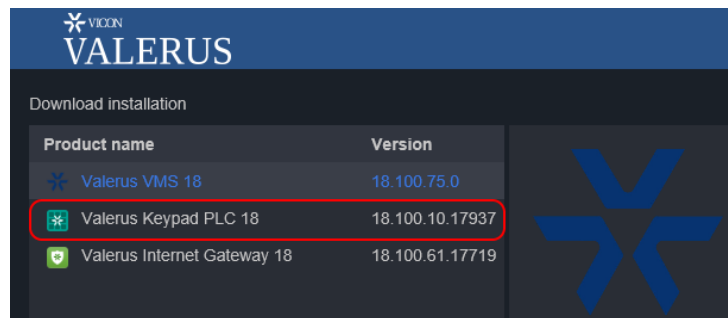
1. Enter setup and press “CAM”. The LEDs in the center of the keyboard will light up to mimic joystick movement during the calibration phase.
2. Move the joystick for a few seconds as far as it will go, in both a horizontal and vertical direction.
3. Rotate the knob clockwise and counterclockwise several times, as far as it will go.
4. Release the joystick to assess its position when idle.
5. After 5 seconds of inactivity, the keyboard will save the values and confirm the calibration.

Valerus Systems

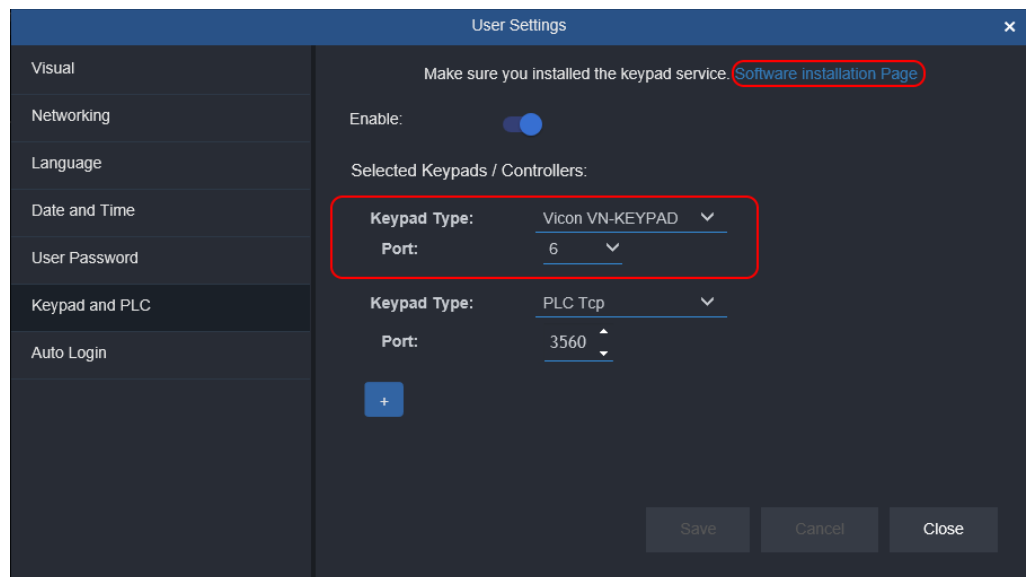
Setting up the Control Driver

For the keypad to work with Valerus, the Keypad driver must be enabled. If the correct driver is not installed, a message will display.

If you need to install the current software for the keypad, click on the Software installation page link and install the latest Valerus Keypad PLC driver.

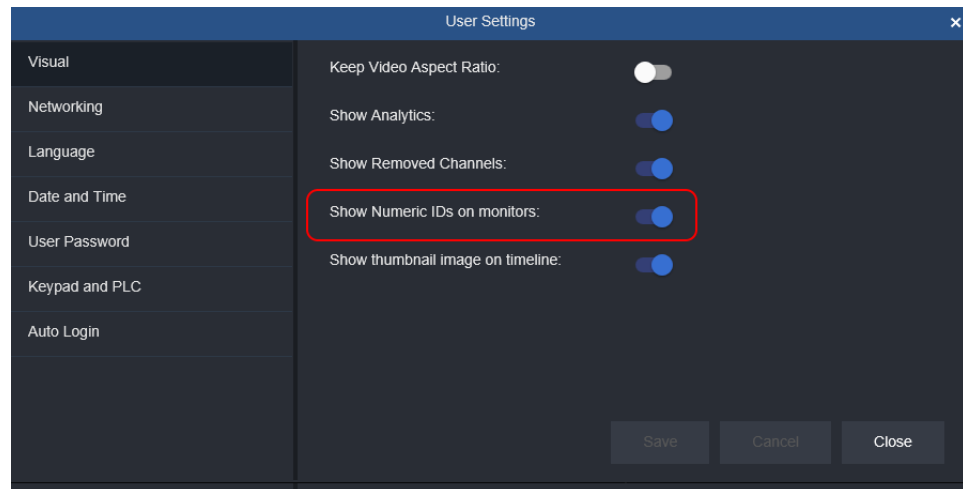


Once installed you will be able to enable and select a keypad as shown below. From the drop down list select Vicon VN-KEYPAD and enter the COM port.



Configuring Valerus

In order for the keypad to be able to control Valerus numeric IDs must be assigned to cameras and monitors. Under User Settings turn the Show Numeric IDs on monitors to On.



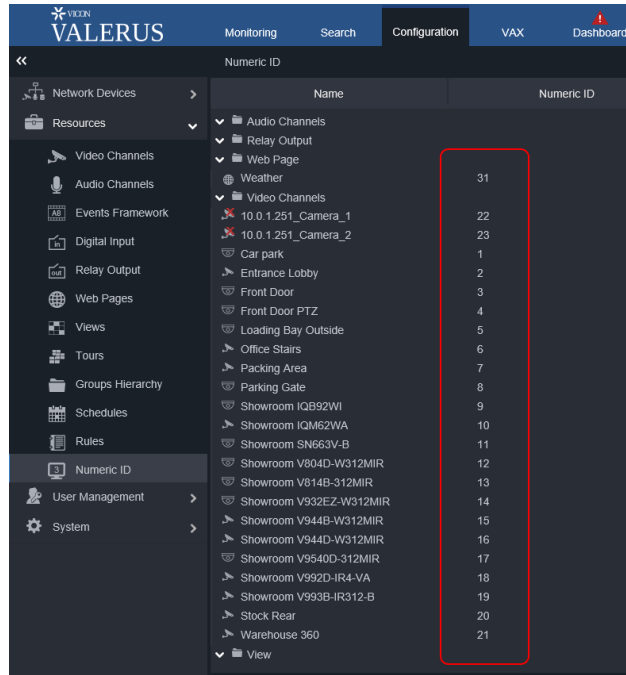
When saved, the Monitor ID will show at the top center of the screen. By default, this will be “1” but when adding additional monitors, each must have its own unique ID. Clicking on the number allows it to be changed and saved.



Assign ID and Save

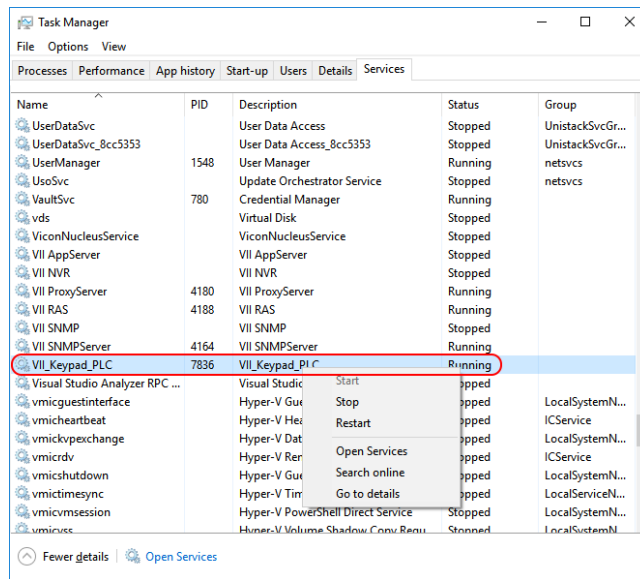
To configure the camera IDs, go to Configuration/Resources/Numeric ID.

Each Camera, View, Tour or other resource can be assigned a numeric ID and each must have its own unique number.



Note

If the keypad fails to communicate with Valerus, recheck the above settings. On occasion it may be necessary to restart the keypad service. To do this, right click the task bar and select Task Manager. Go to services and locate the VII_Keypad_PLC service. Right click and Restart.



Operation with Valerus

The VN-KEYPAD provides control access to the Valerus VMS, including multi-screen controls, video controls, and Quick Playback. Controls also include standard PTZ, preset selection and camera/monitor select actions. Refer to Valerus software documentation as needed.

There are buttons on the left side for Quick Playback, as well as auxiliary relay selection and preset selection. A CANCEL button is also provided. On the right side, there are buttons for autopan (A/P), autoiris (A/I), lens speed, pan-and-tilt (P/T) speed and lens focus (NEAR/FAR) and iris (OPEN/CLOSE) control. At the top, the Start Macro button stops the stream in the currently active quadrant and the Stop Macro button stops all streams on the currently selected monitor; buttons for playing and pausing video are also provided. At the bottom, there are buttons providing options for the video layout on the selected screen, including Full Screen, and a button that selects the quadrant of video that is being controlled.

Note

The CHANGE MODE button is only used when working with VMDC. The SHIFT button is for advanced use.

1. Select a monitor by entering its number via the numeric keypad and then pressing the Monitor key on the keypad.
2. All further commands are directed to the target monitor.
3. To select a layout on the selected monitor, choose 1, 4, 6, 9, 16, or 25 video display formats. Press the desired display number on the numeric keypad and then press the LAYOUT button.
4. To select a quadrant for action, enter the quadrant number via the numeric keypad (top left quadrant is number 1, counting to the right and down) and press the QDRNT key from the bottom row of keys. All further commands are directed to the selected quadrant. The selected quadrant is highlighted with a Yellow border.
5. To start a camera in a selected quadrant, enter the camera number via the numeric keypad and press the Camera button. If the camera is a PTZ, all PTZ actions are directed to this camera until a new camera is selected or a different quadrant.

Note

When selecting a single screen format, quadrant number "1" must be entered to activate control unless it is already active.

The Quick Playback buttons provide playback for 15, 30, 60 and 90 seconds.

1. Select the quadrant (camera) for playback. The quadrant will be outlined with Yellow border.

2. Press the Quick Playback button for the desired number of seconds of playback.
3. Pressing the individual function key for play or pause commands will perform those functions on the video from the selected camera quadrant.
4. The Jog/Shuttle center wheel provides for Frame Advance and Frame Reverse. Rotating the wheel clockwise commands the video to advance frame by frame. Rotating counterclockwise reverses frame by frame.
5. Twisting the outer ring of the Jog/Shuttle clockwise commands the video to fast forward or twisting counterclockwise to rewind.

Control buttons are provided to Play and Pause video.

To store presets:

1. Preset positions should be configured in Valerus by going to Configuration/Resources/Video Channels/PTZ Settings.

To activate presets:

1. Preset positions are recalled by entering the preset number from the numeric keypad and pressing the Preset key.

Using the PTZ and other lens functions on the controller:


1. To move the pan-and-tilt device in a horizontal (pan) or vertical (tilt) motion, deflect the joystick in the direction desired; moving the joystick in a diagonal motion provides simultaneous pan and tilt.
2. To control zoom, twist the top of the joystick clockwise to zoom in; turning it in a counterclockwise direction will zoom out.
3. P/T Speed will toggle the Pan and Tilt speeds so that it slows to a more manageable speed when tracking an object.


ViconNet/VMDC Systems

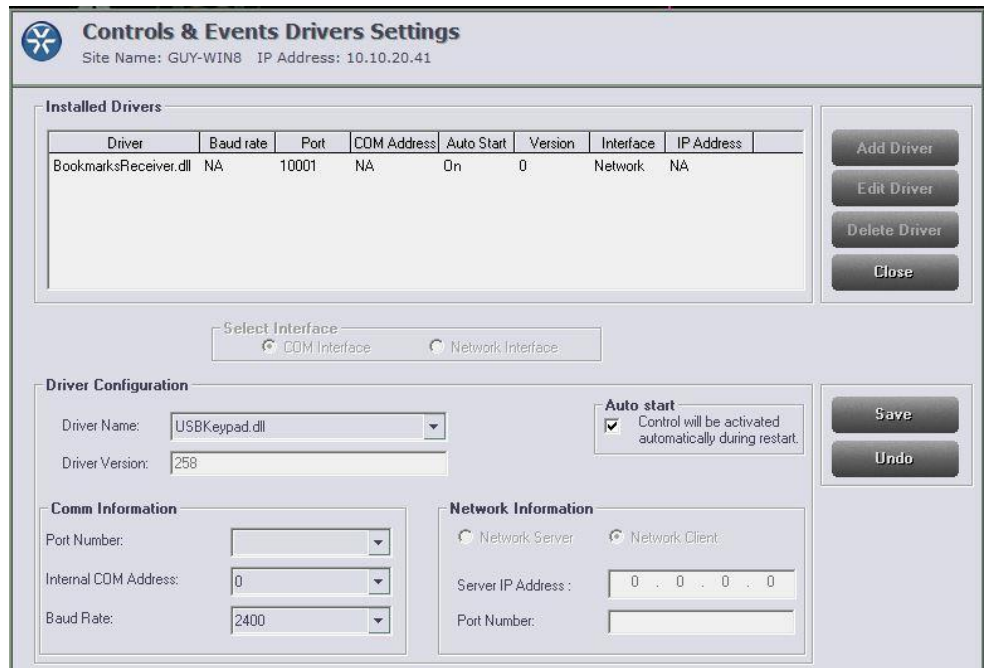
Setting up the Control Driver

For the keypad to work with ViconNet, the correct driver must be installed for the keypad. The correct driver is included in the ViconNet 8.1 software. It can then be configured through the Controls and Events Drivers Settings.

From the ViconNet *Main* window, click . The *Setup Site Selection* window is displayed, showing a list of all currently connected transmitters and Workstations.

1. Select the **site name** of the system the keypad is connecting to and click . The *System Settings* window is displayed.

2. Click the  button. The ***Controls & Events Drivers Settings*** window is displayed.



Controls & Events Drivers Settings
Site Name: GUY-WIN8 IP Address: 10.10.20.41

Installed Drivers

Driver	Baud rate	Port	COM Address	Auto Start	Version	Interface	IP Address
BookmarksReceiver.dll	NA	10001	NA	On	0	Network	NA

Add Driver
Edit Driver
Delete Driver
Close

Select Interface:
 COM Interface
 Network Interface

Driver Configuration

Driver Name: USBKeypad.dll
 Driver Version: 258

Auto start
 Control will be activated automatically during restart.

Comm Information

Port Number: [dropdown]
 Internal COM Address: 0
 Baud Rate: 2400

Network Information

Network Server
 Network Client

Server IP Address: 0 . 0 . 0 . 0
 Port Number: [input]

Save
Undo

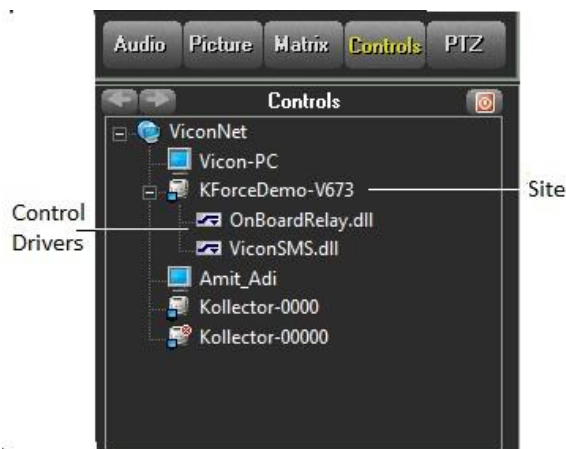
3. Click the **Add Driver** button to display a list of the pre-installed drivers.
4. From the **Driver Name** list, select the required driver. The driver name for this device is USBkeypad.dll.
5. Select the **Internal COM Address** with which to communicate with the device and the **Port Number** it is using on Windows (refer to page 3); the **Baud Rate** is not important and can be left at the default.
6. Select/Deselect **Auto start** checkbox.
 - If selected, the control is automatically activated on system startup.
 - If not selected, the control must be activated manually in the *Main* screen, as described in the section *Activating a Control*, below.
7. Click **Save** to save the settings.
8. Click **Close** to exit the **Controls & Events Drivers Settings** window.

Activating a Control

Controls, such as the keypad, must be activated in order for them to function in the ViconNet system.

To manually activate a control:

1. In the *Main* window, click **Controls**. A list (tree) of all sites with controls configured is shown in the lower-left panel. To see the controls configured for a specific site, click on the site in the list.



2. To activate it, click on keypad in the list of controls. If the Auto start is checked in the setup, the control will now always be active in ViconNet/VMDC when the software is loaded.

Operation

The VN-KEYPAD provides control access to NVRs/Workstations/Kollektors, including multi-screen controls, video controls, Quick Playback and macro selection. Controls also include standard PTZ, preset selection and camera/monitor select actions. NVRs/Workstations/Kollektors are configured within the ViconNet system. Refer to the appropriate Kollektor and ViconNet documentation as needed.

There are buttons on the left side for Quick Playback, as well as alarm acknowledgement, auxiliary relay selection and preset selection. A CANCEL button is also provided. On the right side, there are buttons for autopan (A/P), autoiris (A/I), lens speed, pan-and-tilt (P/T) speed and lens focus (NEAR/FAR) and iris (OPEN/CLOSE) control. At the top, buttons for starting/stopping macros and playing and pausing video are provided. At the bottom, there are buttons providing options for the video layout on the ViconNet main screen, including Full Screen, and a button that selects the quadrant of video that is being controlled.

Note

The CHANGE MODE button is only used when working with VMDC. The SHIFT button is for advanced use.

When connected to a ViconNet station, the monitor does not need to be selected (there is only one monitor); proceed to step 3. When connected to a VMDC with multiple monitors, the required monitor needs to be selected first.

1. Select a Monitor by entering its number via the numeric keypad and then pressing the Monitor key on the keypad (VMDC in ViconNet mode is numbered "0" and the other monitors are numbered in the monitor layout settings in VMDC).
2. All further commands are directed to the target monitor.
3. To select a layout on the selected monitor, choose 1, 4, 6, 9 or 16 video displays in ViconNet (10, 25, 36 and 64 video segments are additionally available in VMDC). Press the desired display number on the numeric keypad and then press the LAYOUT button.
4. To select a quadrant for action, enter the quadrant number via the numeric keypad (top left quadrant is number 1, counting to the right and down) and press the QDRNT key from the bottom row of keys. All further commands are directed to the selected quadrant. The selected quadrant is highlighted with a pink border.
5. To start a camera in a selected quadrant, enter the camera number via the numeric keypad and press the Camera button. If the camera is a PTZ, all PTZ actions are directed to this camera until a new camera is selected, a different quadrant is selected or a different Kollektor/NVR/WS is targeted.

The Quick Playback buttons provide playback for 15, 30, 60 and 90 seconds.

1. Select the quadrant (camera) for playback. The quadrant will be outlined with pink border.
2. Press the Quick Playback button for the desired number of seconds of playback.

Multi-screen displays are possible on Collectors/NVRs/WS. Pressing the Full Screen button commands the Collector/NVR/WS to display the previously selected quadrant or camera full screen.

To store presets:

1. Position the camera to desired location.
2. Enter the preset number to store, press and hold the Shift key and click the preset key.

To activate presets:

1. Preset positions are recalled by entering the preset number from the numeric keypad and pressing the Preset key

Using the PTZ and other lens functions on the controller:

1. To move the pan-and-tilt device in a horizontal (pan) or vertical (tilt) motion, deflect the joystick in the direction desired; moving the joystick in a diagonal motion provides simultaneous pan and tilt.
2. To control zoom, twist the top of the joystick clockwise to zoom in; turning it in a counterclockwise direction will zoom out.
3. Focus (near and far) and Iris (open and close) are controlled pressing the appropriate push button located next to the joystick.
4. Use the Lens Speed key to cycle through the lens speeds.
5. To use autopan or autoiris functions, press the appropriate key A/P or A/I.

Auxiliary relays are actioned by selecting the auxiliary relay number from the numeric keypad and pressing the Aux key. Note that momentary aux functions stay active as long as the key button is pressed; latching relays remain active until the button is pressed again.

Macros must be named with a number in ViconNet if they are to be recalled by the keypad. The number can be from 1-999. To recall macros programmed at the Collector/NVR/WS, enter the macro number via the numeric keypad and press the START MACRO button; press STOP MACRO to halt the macro. Macros must be previously defined.

Control buttons are provided to Play and Pause video. The Jog/Shuttle provides for Frame Advance and Frame Reverse as well as Fast Forward and Reverse.

1. Pressing the individual function key for play or pause commands the Kollector/NVR/WS to perform those functions on the video from the selected camera quadrant.
2. The Jog/Shuttle center wheel provides for Frame Advance and Frame Reverse. Rotating the wheel clockwise commands the video to advance frame by frame. Rotating counterclockwise reverses frame by frame.
3. Twisting the outer ring of the Jog/Shuttle commands the video to either fast forward or rewind, twisting clockwise to fast forward and counterclockwise to rewind.

Maintenance

The VN-KEYPAD requires no scheduled maintenance other than an occasional cleaning to remove fingerprints.

Shipping Instructions

Use the following procedure when returning a unit to the factory:

1. Call or write Vicon for a Return Authorization (R.A.) at one of the locations listed below. Record the name of the Vicon employee who issued the R.A.

Vicon Industries Inc.
135 Fell Court
Hauppauge, NY 11788
Phone: 631-952-2288; Toll-Free: 1-800-645-9116; Fax: 631-951-2288

For service or returns from countries in Europe, contact:

Vicon Industries Ltd
Unit 4, Nelson Industrial Park,
Hedge End, Southampton
SO30 2JH, United Kingdom
Phone: 44/(0)1489/566300; Fax: 44/(0)1489/566322

2. Attach a sheet of paper to the unit with the following information:
 - a. Name and address of the company returning the unit
 - b. Name of the Vicon employee who issued the R.A.
 - c. R. A. number
 - d. Brief description of the installation
 - e. Complete description of the problem and circumstances under which it occurs
 - f. Unit's original date of purchase, if still under warranty
3. Pack the unit carefully. Use the original shipping carton or its equivalent for maximum protection.
4. Mark the R.A. number on the outside of the carton on the shipping label.

Technical Information

Electrical

Input Voltage: Via USB
 Power Consumption: 350 mA

Connectors, Controls and Display

Connector: USB cable for connection as serial device and power

Front Panel:

Numeric Keypad: Number entry
 Camera Key: Enters camera number
 Monitor Key: Enters monitor number
 Function Keys: Keys that select Macro, Multi-Screen Layout and Full Screen
 Preset Key: Enters preset number
 Alarm Key: Acknowledges alarms
 Shift Key: For future use of advanced functions
 Joystick: Controls pan and tilt movement; twist top controls zoom in/out
 Focus: Two buttons to control lens focusing Near and Far
 Iris: Two buttons to control lens iris to Open and Close
 Jog/Shuttle: Used to control frame advance and reverse, fast forward and reverse video
 Video Controls: Used to Play, Pause and Quick Playback video

Mechanical

Construction: Plastic
 Finish: Black and white buttons
 Dimensions: Height: 3.5 in (89 mm)
 Width: 15 in. (379 mm)
 Depth: 8.8 in (224 mm)
 Weight: 3.0 lb (1.4 kg)

Environmental

Operating
 Temperature Range: 32 to 113°F (0 to 45°C)
 Operating Humidity
 Range: Up to 90% relative, non-condensing

Vicon Standard Equipment Warranty

Vicon Industries Inc. (the "Company") warrants your equipment to be free from defects in material and workmanship under Normal Use from the date of original retail purchase for a period of three years, with the following exceptions:

1. All IQEYE Cameras: Two years if purchased before 1/1/2011.
2. Alliance-mini (IQD3xx), Alliance-mx (IQMxxx) and 3 Series (IQ03xx): Five years if purchased between 1/2/2011 – 12/31/2014.
3. Alliance-Pro (IQA3xx): Five years if purchased between 3/2/2012 – 12/31/2014. Three years if the motorized lens (IQA3xx-A3) option.
4. Access Control System Components: Two year from date of original retail purchase.
5. Uninterruptible Power Supplies: Two years from date of original retail purchase.
6. VDR-700 Recorder Series: One year from date of original retail purchase.
7. V5616MUX: One year from date of original retail purchase.
8. Arecont Cameras: One year from date of original retail purchase.
9. FMC series fiber-optic media converters and associated accessories: Lifetime warranty.
10. For PTZ cameras, "Normal Use" excludes prolonged use of lens and pan-and-tilt motors, gear heads, and gears due to continuous use of "autopan" or "tour" modes of operation. Such continuous operation is outside the scope of this warranty.
11. Any product sold as "special" or not listed in Vicon's commercial price list: One year from date of original retail purchase.

NOTE:

- If the product is to be used outdoors or in dusty, humid, or other hostile environments, it must be suitably protected.
- Camera products must be protected, whether in use or not, from exposure to direct sunlight or halogen light as the light may damage the camera image sensor. This applies to both indoor and outdoor use of the cameras.
- For camera products supplied without a lens, extreme care should be used when mounting a lens on these products. Damage to the product due to incorrectly mounted lenses will invalidate this limited hardware warranty.
- Failure to comply with any of the aforementioned requirements will invalidate this Limited Hardware Warranty.

Date of retail purchase is the date original end-user takes possession of the equipment, or, at the sole discretion of the Company, the date the equipment first becomes operational by the original end-user.

The sole remedy under this Warranty is that defective equipment be repaired or (at the Company's option) replaced, at Company repair centers, provided the equipment has been authorized for return by the Company, and the return shipment is prepaid in accordance with policy. Repaired or replacement hardware will be warranted for the remainder of the original Warranty Period or ninety (90) days, whichever is longer. When a product or part is exchanged the replacement hardware becomes the property of the original purchaser and all hardware or part thereof that is replaced shall become the property of Vicon.

The warranty does not apply (a) to faulty and improper installation, maintenance, service, repair and/or alteration in any way that is not contemplated in the documentation for the product or carried out with Vicon consent in writing, operation adjustments covered in the operating manual for the product or normal maintenance, (b) to cosmetic damages, (c) if the product is modified or tampered with, (d) if the product is damaged by acts of God, misuse, abuse, negligence, accident, normal wear and tear and deterioration, improper environmental conditions (including, but not limited to, electrical surges, water damage, chemical exposure, an/or heat/cold exposure) or lack of responsible care, (e) if the product has had the model or serial number altered, defaced or removed, (f) to consumables (such as storage media or batteries) (g) to products that have been purchased "as is" and Vicon the seller or the liquidator expressly disclaim their warranty obligation pertaining to the product, (h) to any non-Vicon hardware product or any software (irrespective of packaged or sold with Vicon hardware product) and Vicon products purchased from an unauthorized distributor/reseller, (i) to damage that occurs in shipment or (j) to damages by any other causes not related to defective design, workmanship and/or materials.

The warranty for the products shall run from Vicon to End User customers only (including product purchased through authorized partners and resellers). Vicon is not obligated under any circumstances to honor warranties on product(s) purchases from internet auction sites including eBay, uBid or from any other unauthorized resellers. Except as explicitly provided herein, Vicon disclaims all other warranties, including the implied warranties of fitness for a particular purpose and merchantability.

Software supplied either separately or in hardware is furnished on an "As Is" basis. Vicon does not warrant that such software shall be error (bug) free. Software support via telephone, if provided at no cost, may be discontinued at any time without notice at Vicon's sole discretion. Vicon reserves the right to make changes to its software in any of its products at any time and without notice.

The Warranty and remedies provided above are exclusive and in lieu of all other express or implied warranties including, but not limited to, the implied warranties of merchantability or fitness for a particular purpose. Certain jurisdictions do not allow the exclusion of implied warranties. If laws under such jurisdictions apply, then all express and implied warranties are limited to the warranty period identified above. Unless provided herein, any statements or representations made by any other person or firm are void. Except as provided in this written warranty and to the extent permitted by law, neither Vicon nor any affiliated shall be liable for any loss, (including loss of data and information), inconvenience, or damage, including, but not limited to, direct, special, incidental or consequential damages, resulting from the use or inability to use the Vicon product, whether resulting from breach of warranty or any other legal theory. Notwithstanding the foregoing, Vicon total liability for all claims under this warranty shall not exceed the price paid for the product. These limitations on potential liabilities have been an essential condition in setting the product.

No one is authorized to assume any liability on behalf of the Company, or impose any obligations on it in connection with the sale of any Goods, other than that which is specified above. In no event will the Company be liable for indirect, special, incidental, consequential, or other damages, whether arising from interrupted equipment operation, loss of data, replacement of equipment or software, costs or repairs undertaken by the Purchaser, or other causes.

This warranty applies to all sales made by the Company or its dealers and shall be governed by the laws of New York State without regard to its conflict of laws principles. This Warranty shall be enforceable against the Company only in the courts located in the State of New York.

The form of this Warranty is effective August 1, 2015.

THE TERMS OF THIS WARRANTY APPLY ONLY TO SALES MADE WHILE THIS WARRANTY IS IN EFFECT. THIS WARRANTY SHALL BE OF NO EFFECT IF AT THE TIME OF SALE A DIFFERENT WARRANTY IS POSTED ON THE COMPANY'S WEBSITE, WWW.VICON-SECURITY.COM. IN THAT EVENT, THE TERMS OF THE POSTED WARRANTY SHALL APPLY EXCLUSIVELY.



VICON INDUSTRIES INC.

For office locations, visit the website: www.vicon-security.com

