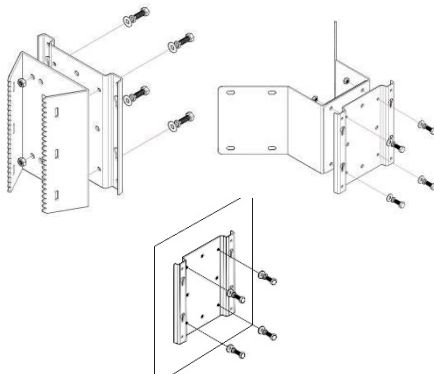
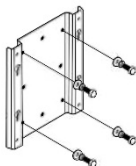


Quick Guide: Installation of V1001-JB with V1001-PL/V1001-CM/V1001-WM

- 1 - Fixed plate
- 1 - Cable gland (pre-installed)
- 2 - Hex head wrench
- 1 - Rubber grommet
- 4 - M8 washer
- 4 - M8 20mm hex head screw
- 4 - M8 20mm round head screw

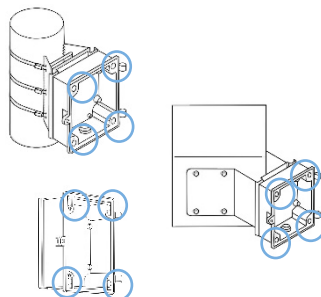
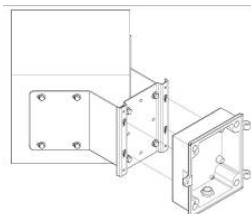
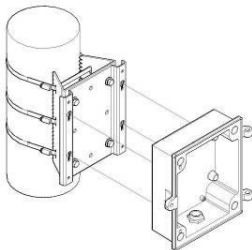


Package Contents

Step 1

Installation Hardware

Use the screws included in the accessory package for the junction box to secure the fixed plate on the pole or corner mount or the wall mounting surface (for wall mount).



Step 2

Remove the junction box cover. Secure the pole mount to the pole or the corner mount to the installation surface. Insert M8 20mm round head screws on back of the junction box and latch them onto fixed plate.

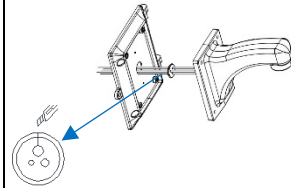
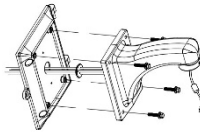
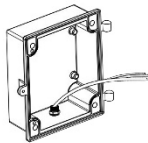
Step 3

Tighten the captive 4x M8 35mm hex head screws in the junction box.

Vicon part number 8009-8343-40-00

Vicon and its logo are registered trademarks of Vicon Industries Inc. All rights reserved.

Product specifications subject to change without notice.



Step 4

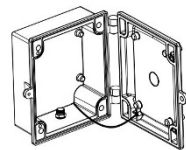
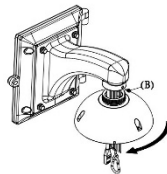
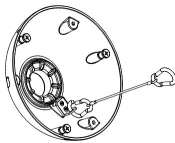
Route cables into the junction box and terminate cables.

Step 5

Route the cables through the wall mount. Secure the wall mount to the junction box cover using four stainless steel anchors and M8 20mm hex head screws.

Step 6

Route cables through one of the cable holes on black rubber grommet. If cable diameter is more than 7 mm, cut a line from grommet edge to a hole and assemble cable into hole along the line. Insert rubber grommet/cable assembly into the hole in the junction box cover.



Step 7

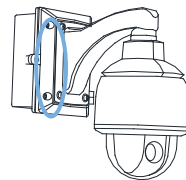
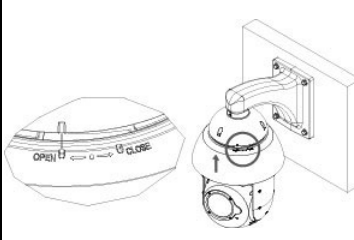
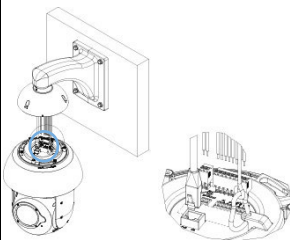
The safety wire provided with the PTZ has two hooks. Hook one end of the safety wire onto the bracket in the Cap.

Step 8

Install the Cap on the wall mount. Pull the safety wire and cables through the Cap and rotate the Cap to align one of the Cap's screw holes with the hole of the mount. Fasten hexagonal screw with proper tool.

Step 9

Reattach the junction box cover assembly. Secure the safety wire in the junction box to the cover.



Step 10

Hook the safety wire on the hook on the PTZ. Connect the cable with terminal block and plug in the corresponding holes and RJ-45 connector.

Step 11

Rotate the camera in the CLOSE direction and tighten the screws to fix the camera on the Cap.

Step 12

Connect the cables in the junction box. Lock junction box cover with captive M8 30mm hex head screws on the cover.