



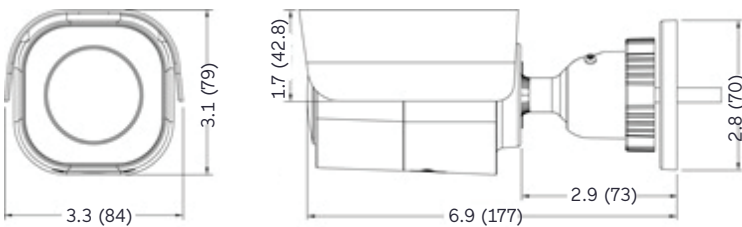
V2105B-W313MIR Roughneck Bullet Camera



Overview

For customers who need to monitor activity in a variety of lighting conditions, from bright light to complete darkness, Vicon's Roughneck® Bullet Camera integrates Smart IR, True WDR, and 5 MP resolution to guarantee superior image quality, regardless of lighting. The camera is protected by a weather-proof (IP67), vandal-resistant (IK08) enclosure, and generates an alert in the event someone attempts to obstruct or move the camera.

Dimension Drawing [in. (mm)]



Pigtail Cable:



Use optional
V2100B-BOX
(sold separately)

Product at a Glance

- ▶ 5 MP resolution
- ▶ True WDR ensures bright areas do not appear saturated and dark areas are not too dark
- ▶ Integrated Smart IR provides uniform illumination in total darkness for high-quality video from 98 ft (30m) away
- ▶ Remote zoom and focus lets you zoom in and out remotely with the click of a mouse
- ▶ The camera's bullet design guarantees a watertight installation

Specifications

| Model | V2105B-W313MIR |
|--|--|
| Camera | |
| Image Sensor: | 1/2.8-in. |
| Max Resolution: | 2592 x 1944 (5 MP) |
| Image Settings: | Digital image effects: flip, and mirror and corridor. Configurable brightness, contrast, saturation, hue, sharpness. White balance. Backlight Compensation (BLC). HLC. Gain control. Gamma correction. Electronic shutter speed. Day/night mode. Dynamic Noise Reduction. Motion detection (4 programmable zones). Privacy masking (8 masks). Dynamic ROI. Digital zoom. Event notification. |
| Video Content Analytics: | Motion, Tampering/Defocus. Museum Search. |
| Electronic Shutter Speed: | Auto (1/2 ~ 1/10,000 sec), manual |
| Day/Night Performance: | True day/night (IR cut filter) |
| Wide Dynamic Range (WDR): | True WDR; 120 dB |
| Minimum Illumination (@ 30 IRE): | Color: 0.05 lux; BW: 0.03 lux, IR Off; 0 lux, IR On |
| IR Distance: | Smart/Adjustable IR. 98 ft (30 m) (850 mm); 16 IR LEDs |
| Lenses | |
| Focal Length: | 3.1-10 mm; 3.2X optical zoom |
| Max. Aperture: | f/1.4 - f/2.8 |
| Iris: | DC autoiris |
| Zoom/Focus Adjust: | Motorized zoom and focus |
| Field of View Horizontal/Vertical/Depth: | 32° (tele) - 96° (wide)/24° (tele) - 69° (wide)/40° (tele) - 124° (wide) |
| Network Video Transmission | |
| Network: | 10/1000Base-T/TX: RJ-45 |
| Image Compression: | H.264; H.265; M-JPEG |
| Resolution: | 2592x1944/1520, 2048x1536, 1920x1080 (1080P), 1280x960/720, 800x600, 640x480 |
| Protocol: | ARP, DHCP, DNS, FTP, HTTP, HTTPS, HLS, ICMP, IGMP, IPv4/6, LDAP, NTP, RTSP/RTCP/RTP, RTMP, QoS, SMTP, SNMP v1/2c/3, TCP, TLS/TTLS, UDP, UPnP, 802.1X, UPnP, Bonjour, DDNS, PPPoE; ONVIF Profile S/G/T |
| Frame Rate: | 30/25 fps max |
| Streams: | Single: 5 MP@30fps; Dual: 5 MP@30fps + 640x480@30fps; Triple: 5 MP@30fps; + 640x480@30fps + 640x480@30fps |
| Users: | Live: 10 users |
| Web Browser: | Chrome®, Safari®, Firefox®, Microsoft Edge® |
| Security: | IP address filtering, HTTPS encrypted data transmission, SSL, IEEE 802.1X, Digest Authentication, Advanced Security |
| Mechanical | |
| Construction: | Camera case: white aluminum. Window: double glass/polycarbonate. Bracket: PC + ABS. |
| Camera Angle of Adjustment: | Adjusted using integral wall mount. Mechanical camera adjustment pan/tilt. |
| Mounting: | Surface mount (wall or ceiling), wall arm, pole, corner, 4x4 electrical plate, backbox |
| Dimensions: | 3.3 in. (84 mm) (W) x 3.1 in. (79 mm) (H) x 6.9 in. (177 mm) (L) |
| Weight: | 2 lb (0.9 kg) |

Specifications

| | |
|--------------------------------|--|
| Model | V2105B-W313MIR |
| Electrical | |
| Input Power: | PoE IEEE 802.3af class 3; 12 VDC (±10%) |
| Current: | 12 VDC: 0.63 A; PoE: 0.16 A |
| Power Consumption: | IR On: 7.6 W; IR Off: 5.2 W |
| Controls and Connectors | |
| Connectors: | Pigtail cable provided; optional backbox required for cabling. Power: 12 VDC: terminal block; PoE/Network: RJ-45 CAT 5; Reset button; Default button; Micro SD card slot for SDHC/SDXC card (128 G max; customer-supplied) |
| Environmental | |
| Operating Conditions: | Outdoor rated Temp: -22° to 140° F (-30° to 60° C) Humidity: up to 90%, non-condensing |
| Approvals: | UL, FCC Class A, CE, IP67, IK08; ONVIF Profile S/T/G, RoHS, BIS |
| Country of Origin: | Taiwan |
| Warranty: | 5 years |

Ordering Information

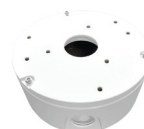
| Model | Description |
|-------------------------------|---|
| V2105B-W313MIR | 5 MP Bullet 3.1-10 mm motorized zoom and focus; autoiris. |
| Mounts and Accessories | |
| V-24CMB-4 | Corner Mount For mounting the bullet camera to a corner. |
| V-20B-A-4 | Pole Mount For mounting the bullet camera to a pole. |
| V2100B-BOX | Backbox For ease of cabling for the bullet camera; compatible with V-24CMB-4 corner mount and V-20B-A-4 pole mount adapter. |
| V2100B-PLATE | Adapter Plate Allows the bullet camera to be mounted on a 4x4 electrical box. |



V-24CMB-4



V-20B-A-4



V2100B-BOX



V2100B-PLATE