
IP FINDER

User Manual



Table of Content

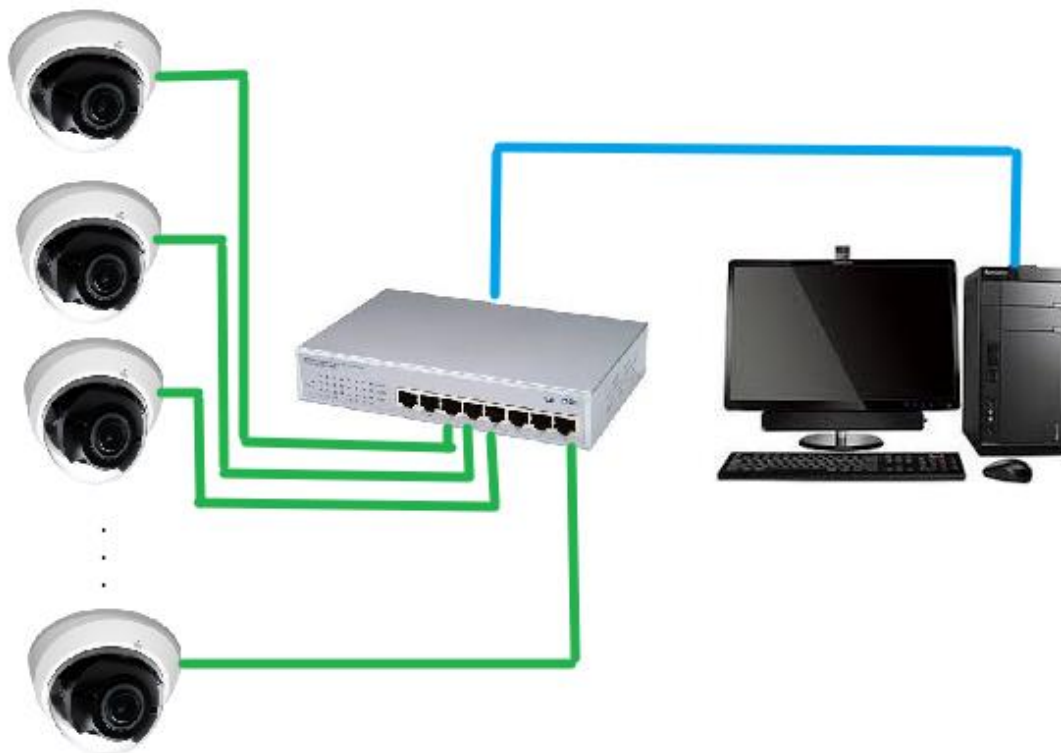
Introduction	3
Requirement	3
User Interface	4
Functions.....	5
FAQ and Troubleshooting	9

Introduction

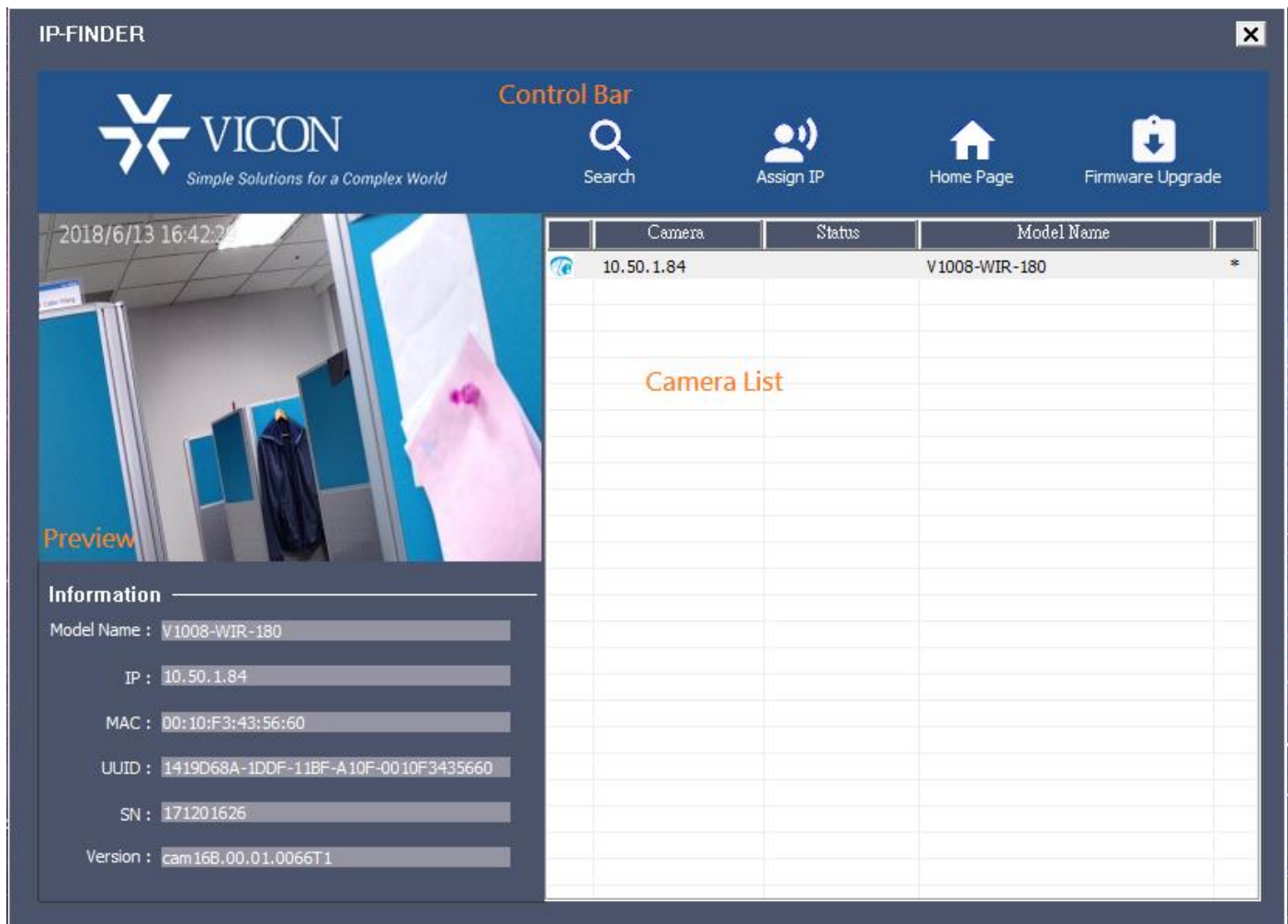
This document is a brief guideline which makes you know how to operate this application so as to search IP cameras in general network environment. This document also provides a lot of illustrations to have you understand the procedure easily.

Requirement

You may have one or more network interfaces such as physical network card embedded in motherboard, USB network card, etc... Before using the application tool, make sure your IP cameras are connected to network group that associated with different network interfaces in local system.







User Interface



UI Block	Description
Control Bar	Contains [Search], [Assign IP], [Home Page] and [Firmware Upgrade] Buttons.
Preview	Show the selected camera image.
Information	Show the selected camera information such as Model Name, IP, MAC, UUID, SN and Version.
Camera List	All cameras list by searching function. Each camera shows the "IP", "Status", "Model Name" and "Device Mark". User can also click these header columns to sort list out.

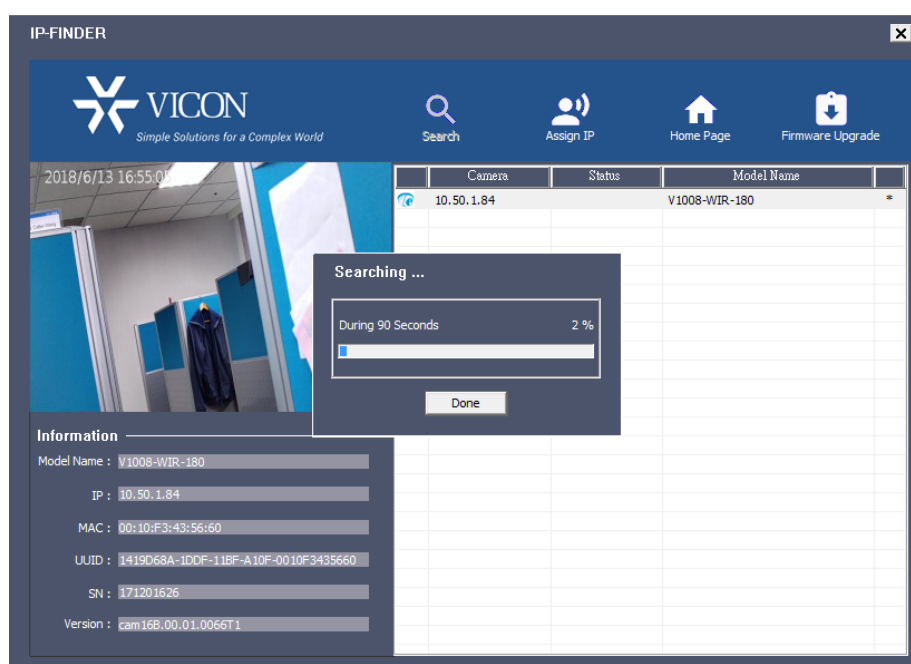
Functions

There are four buttons on the control bar. Each function describes as below:

Function	Button	Description
Search	 Search	Discover IP cameras on network.
Assign IP	 Assign IP	Change IP address of camera that user assigned.
Home Page	 Home Page	Create a new Browser within the home page of camera.
Firmware Upgrade	 Firmware Upgrade	Upgrade camera firmware.

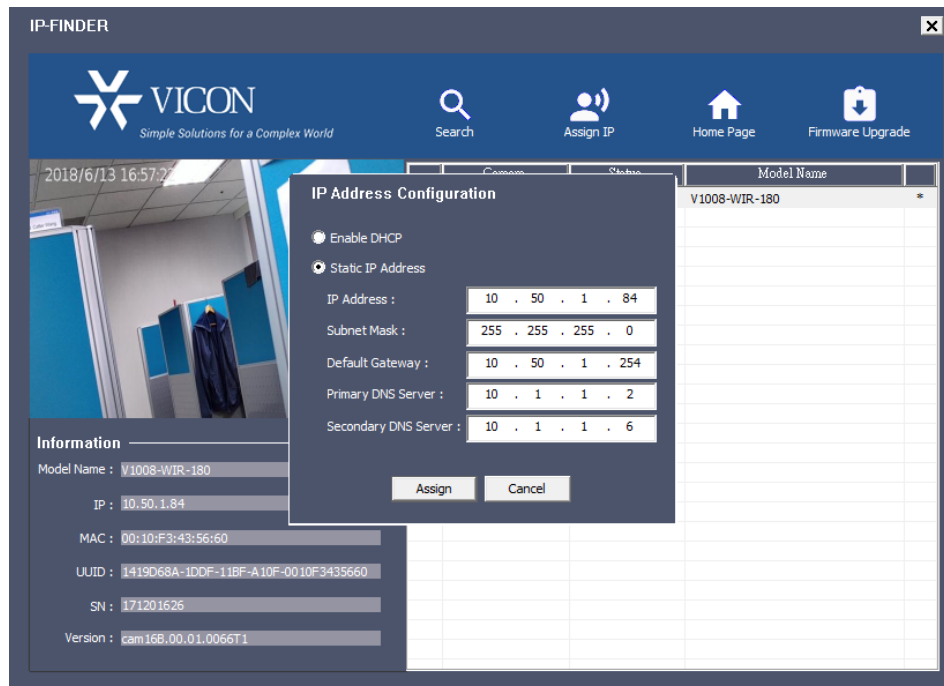
Search

When [Search] button was clicked, application program starts searching each camera which is located on the network. You can click [Done] button to stop searching. Certainly, user can also wait it till 90 seconds expired.



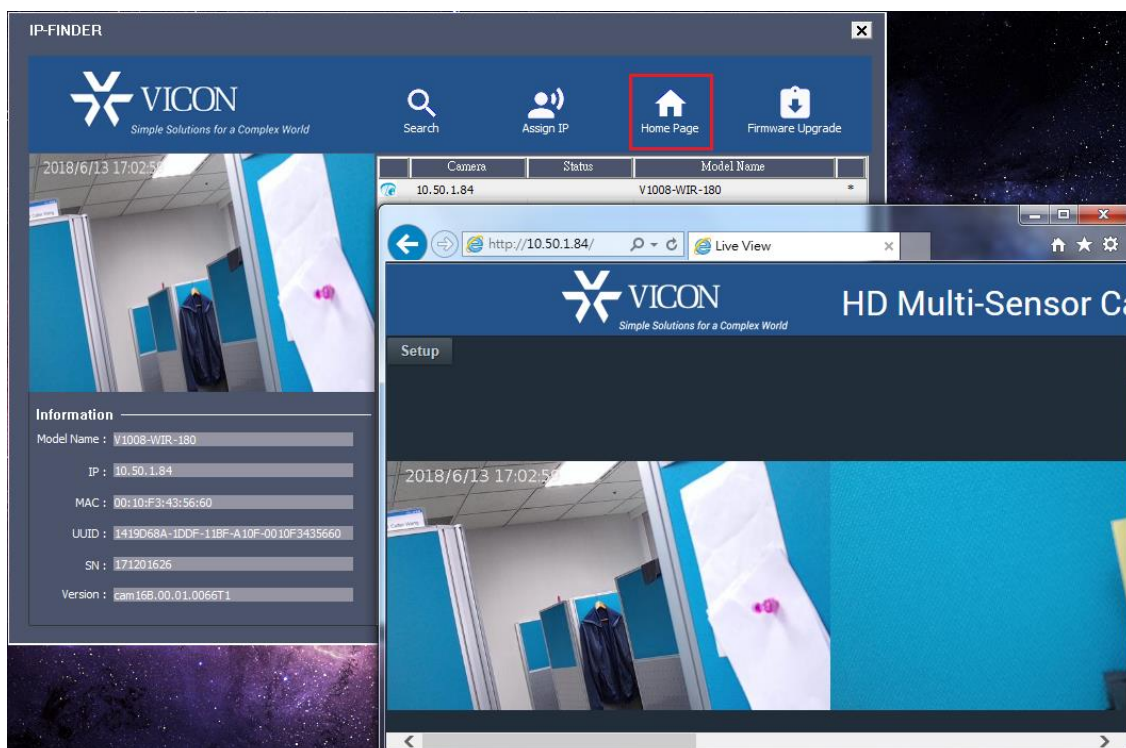
Assign IP

User can choose a camera to change its IP address and others by means of clicking the [Assign IP] button. Once user ran this function, it will pop up “IP Address Configuration” dialog box window. Then you can change the “IP Address”, “Subnet Mask”, “Default Gateway” and other information on the dialog.



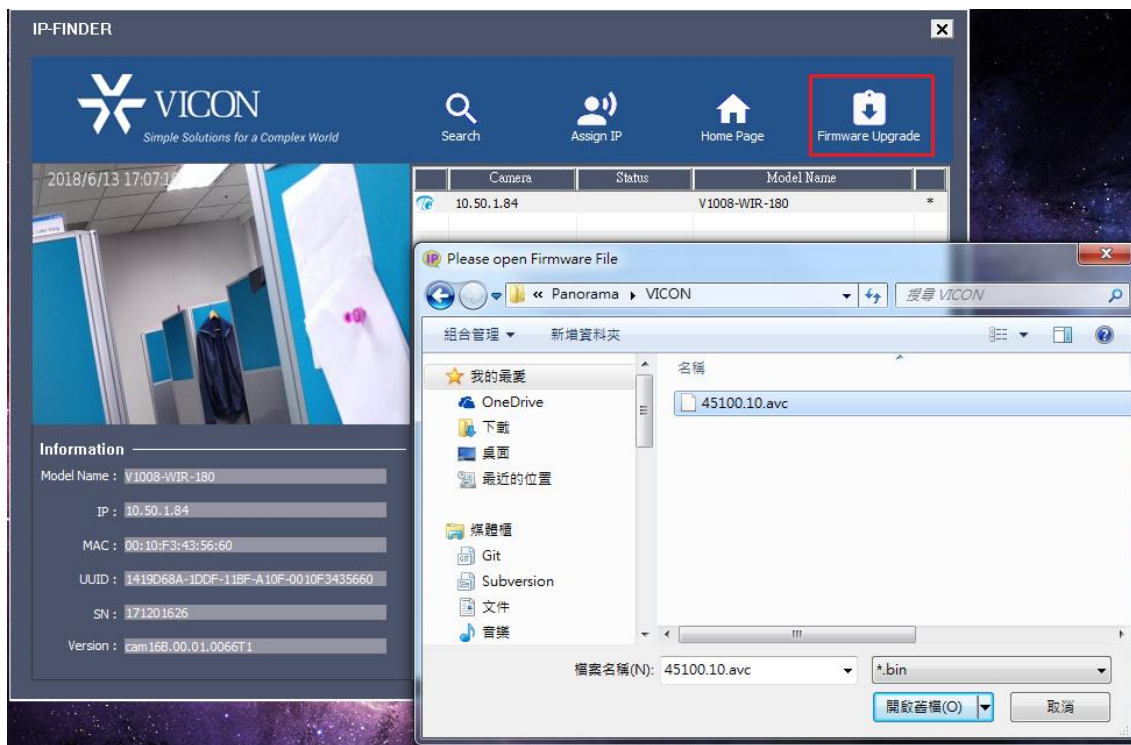
Home Page

To view the home page of camera, you double click the single device in the list or clicked [Home Page] button and it will create a browser then shows home page on it.

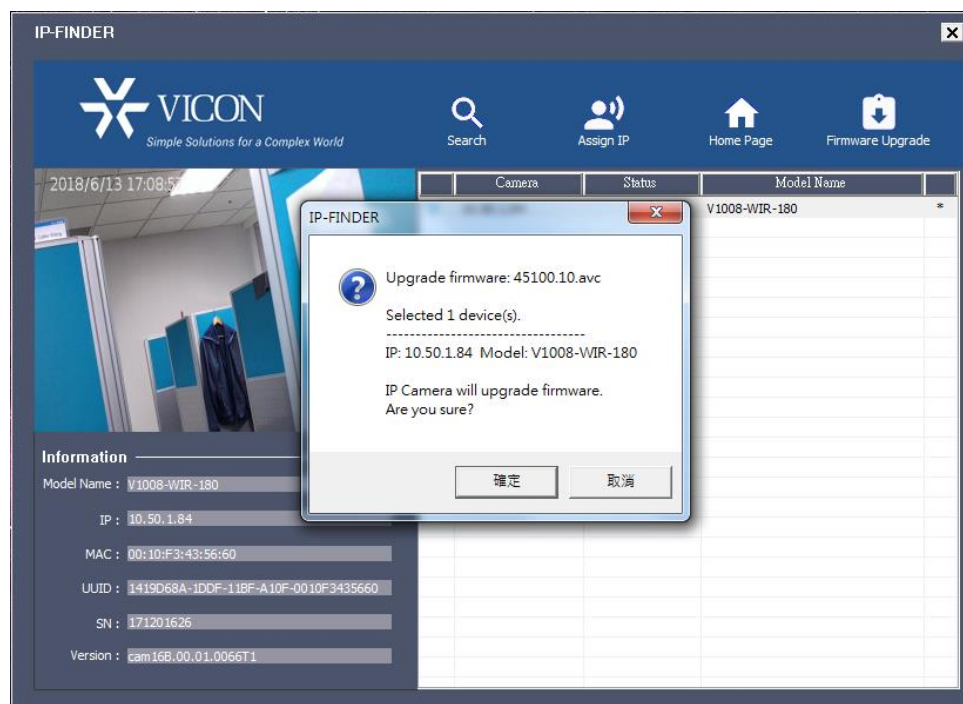


Firmware Upgrade

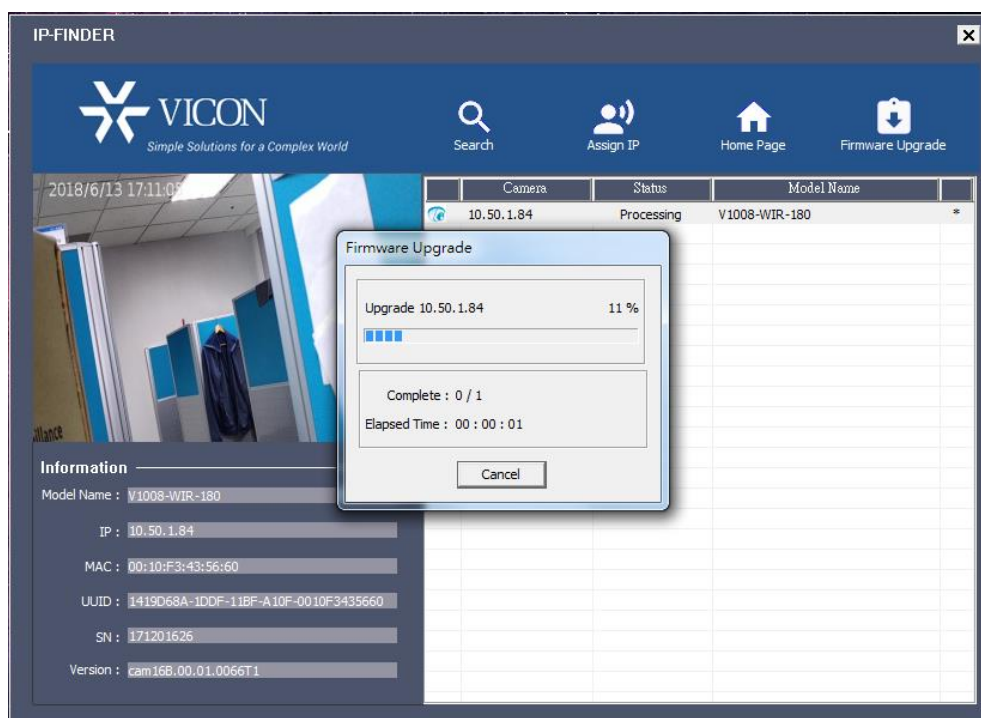
To upgrade camera firmware is to select single camera at first then click [Firmware Upgrade] button. If your device supports firmware upgrade, you load the firmware file for the next step.



After all of steps are done, AP will pop up a dialog box window to show the information of your assigned camera . If all are confirmed well, click [OK] button to do the upgrading progress.



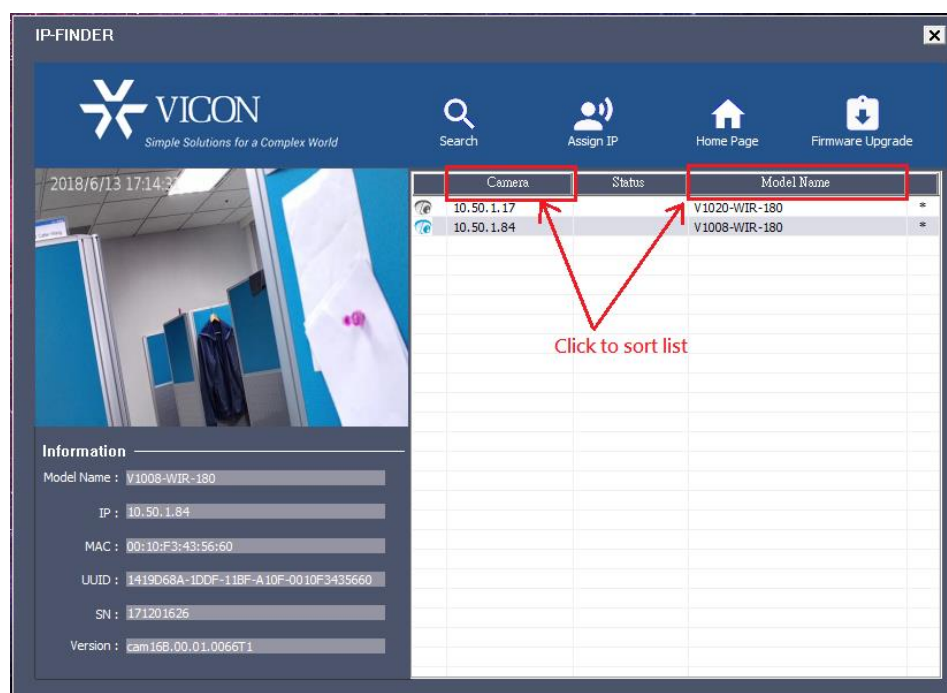
The following picture shows the upgrade is proceeding.



FAQ and Troubleshooting

Q1: Camera list is not in order.

A: User can click the each header column such as “Camera” or “Model Name” to sort list.



Q2: Two devices preview the same image.

A: This is a conflicting issue in IP address. Please assign them to different IP address.

Q3: Some devices cannot preview image, browse home page.

A: Five situations.

Situation 1: No star sign in “Device Mark” means device doesn’t support “Preview”.

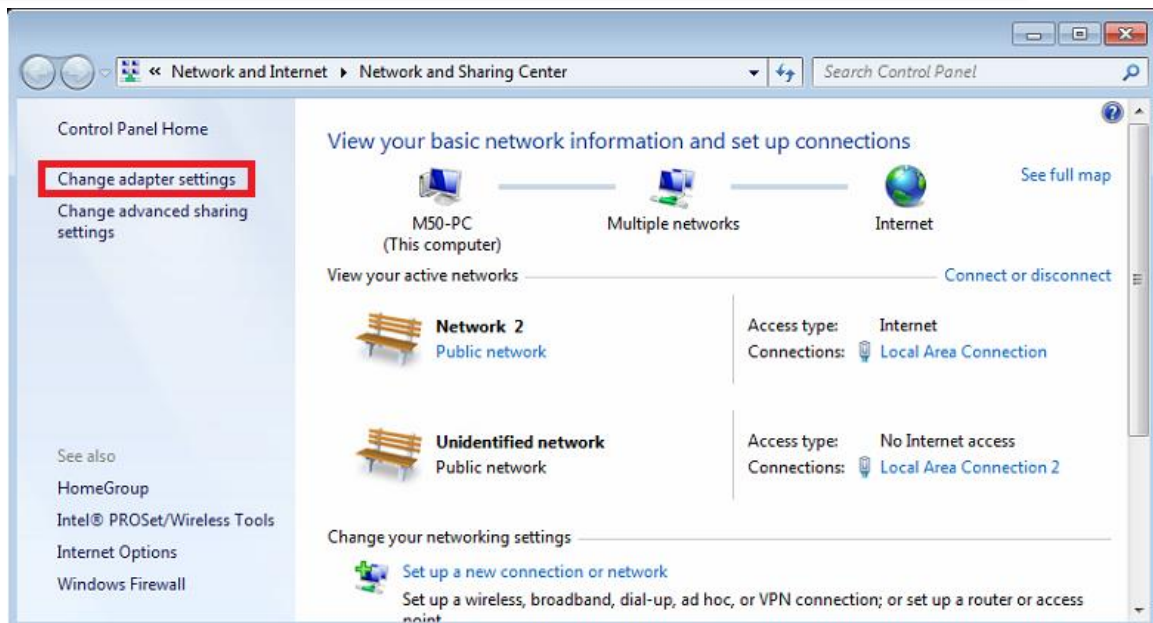
Situation 2: Camera is rebooting, please wait for a while...

Situation 3: After discovering devices, user manually change the http IP address or port on camera web page. So, just click [Search] button to refresh device information again.

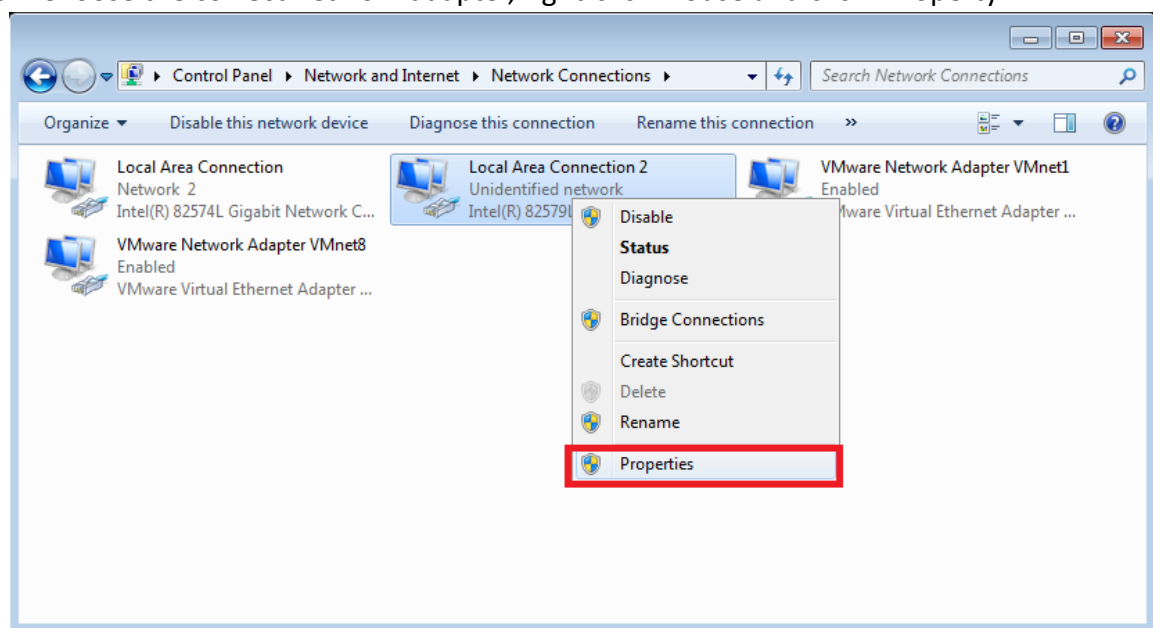
Situation 4: Camera’s MJPEG stream is OFF. Please turn it ON for previewing image.

Situation 5: User’s camera is out of local network. User could use the following the steps to append additional domain:

Step1: Click the “Change adapter setting” from windows control panel.

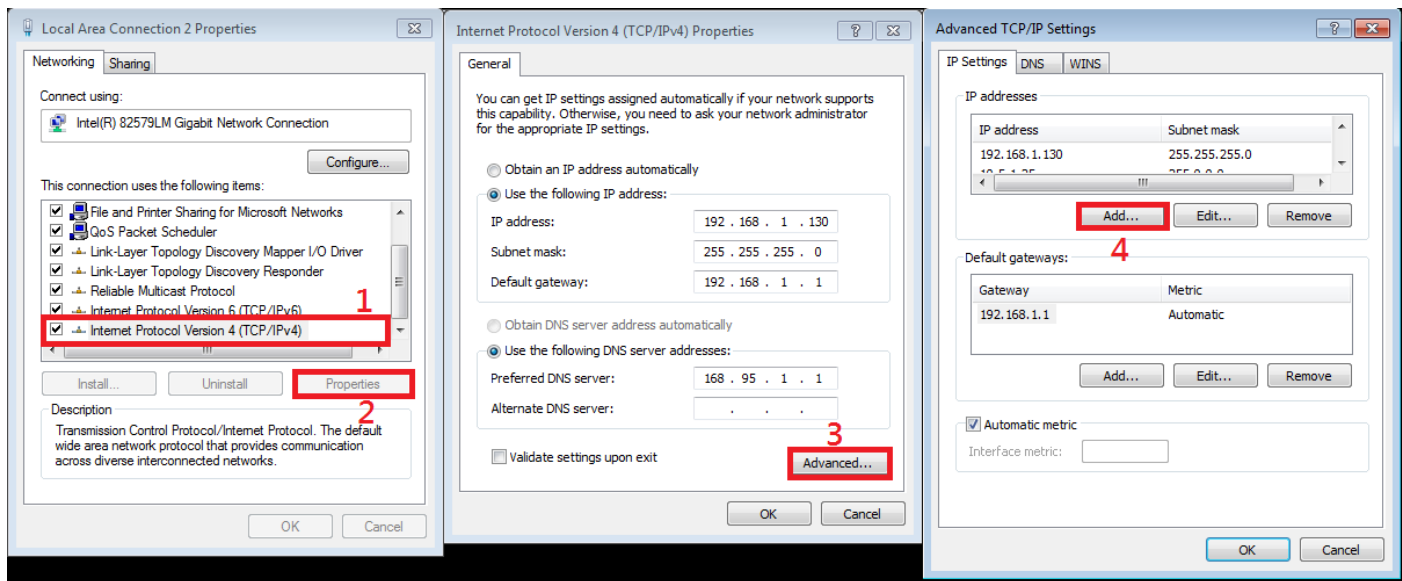


Step2: Choose the correct network adapter, right-click mouse and click “Property”.

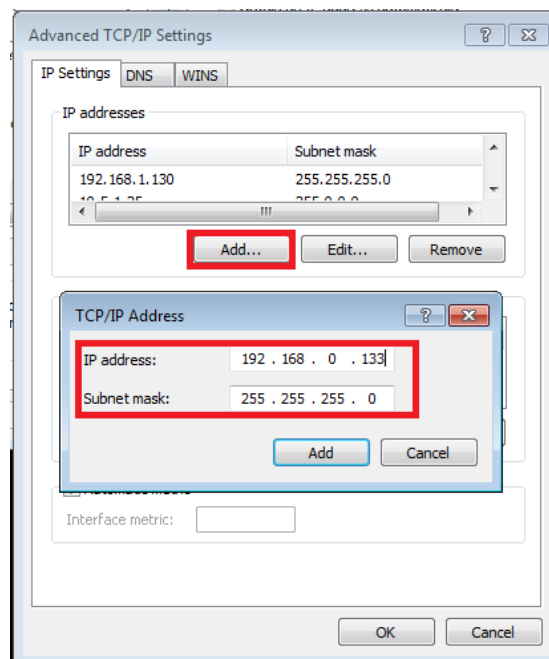


Step3: Do the steps as below diagrams.

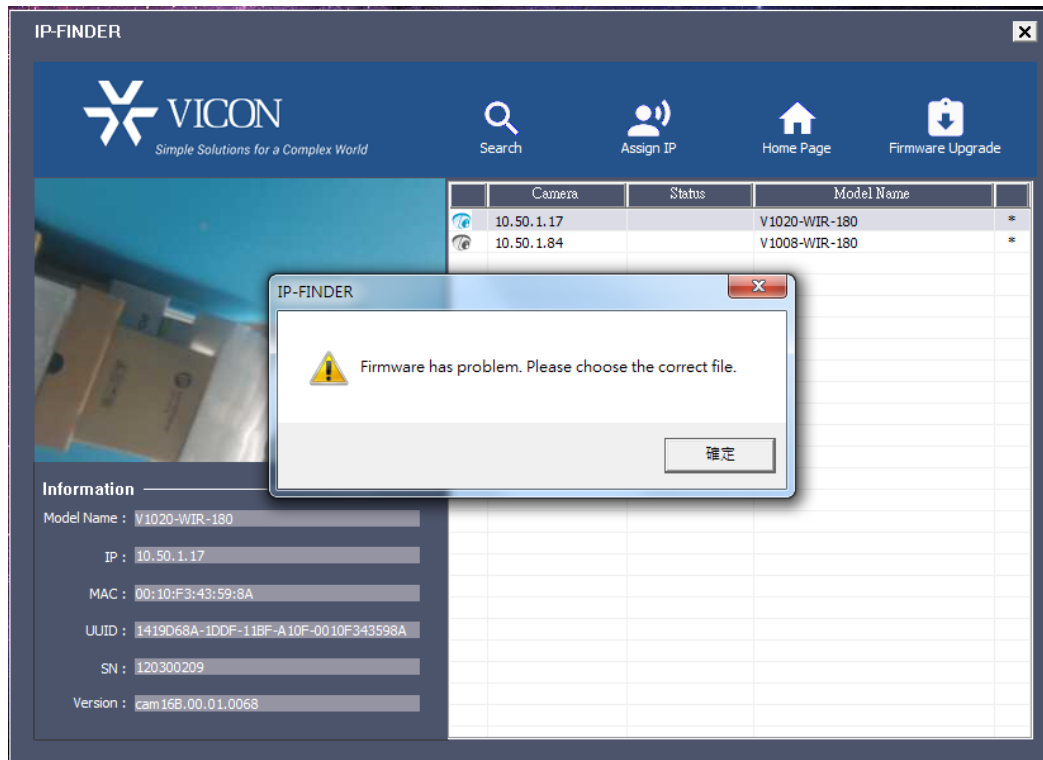
1. Choose the “Internet Protocol Version 4 (TCP/IPv4)” on “Local Area Connection 2 Properties” panel.
2. Click [Properties] button on “Local Area Connection 2 Properties” panel.
3. Click [Advanced...] button on “Internet Protocol Version 4 (TCP/IPv4) Properties” panel.
4. Click [Add] button to add IP address on “Advanced TCP/IP Settings” panel.




5. Input the IP address. For example, if target camera IP address is 192.168.0.250, user should input the 192.168.0.133 (Make sure this IP address 192.168.0. should be the same with target camera. IP 133(in this example) must be unique).



Q4: Why should I do for this situation after upgrading? (See figure)



A: This firmware is incorrect. Please choose the correct file and retry again.

[illegible]

13