

December 2019

Updated Firmware for V1000 Series Multi-Sensor Cameras

General Description

Vicon has released firmware for production for the cameras listed below.

The accompanying Vicon IP Finder discovery tool that needs to be used with this firmware release is version 1.0.6. It can be downloaded from Vicon's website.

These cameras and firmware version have been tested and validated with Vicon's Valerus VMS and with ViconNet V8.x.

Camera	Older Firmware	Newest Firmware
V1008-WIR-180 V1020-WIR-180	fw_cam16B.00.01.0095	fw_cam16B.00.01.0112

Vicon Production

The latest firmware and discovery tool are available on Vicon's website. A link is provided in the installation section of this document. Manufacturing will switch over to the new firmware for new camera production and update all existing inventory.

This is not a mandatory update. However, updating is recommended for cameras intended to work with Vicon's Valerus VMS or other ONVIF-based VMS systems. For other applications, please review the release notes to help determine if the fixes included are relevant to your environment.

Please review the upgrade instructions described at the end of this document.

Corrected Issues

Removed protocol from network tab

An unused protocol G28181 was removed from the network configuration tab.

AWB auto mode

Use Automatic White Balance in auto-mode when global mode is on.

No stream

Fixed an issue where, under certain instances, no stream would be available after an upgrade until the camera was restarted.

AWB synchronization

Improvements to synchronize AWB between the four images.

VLAN

Improvements in stability of cameras operating over VLANs.

Color hue

Fixed an issue where the four images could show a slight difference in color hue under very specific exposure conditions.

ONVIF response

An issue was fixed where in specific situations the camera would stop responding to ONVIF commands.

Cold start

Some changes were implemented to allow the camera to start properly in cold temperatures.

Web interface

Some improvements were made in the initial page of the web interface of the camera.

Known Issue

AWB difference between four images.

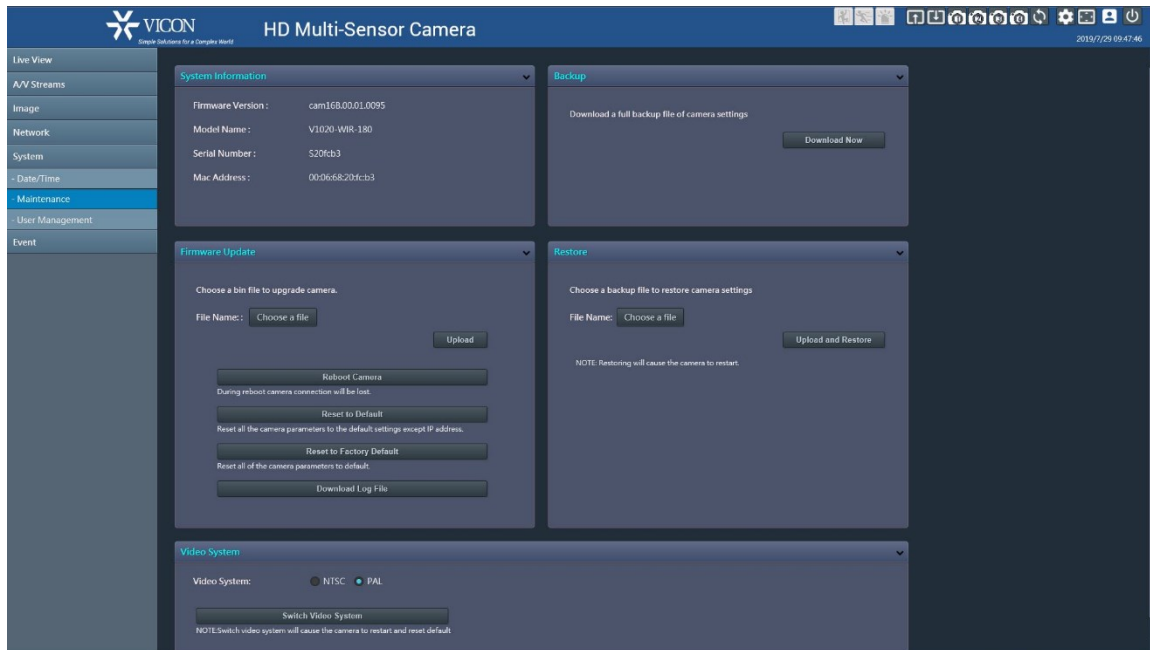
Under certain lighting conditions it is possible to have a noticeable difference in the AWB (Automatic White Balance) among the four streams.

Installing the Updated Firmware

The latest firmware as well as the Vicon IP Finder discovery tool are available on Vicon's website from the Software Downloads tab. A link is provided below.

<http://www.vicon-security.com/software-downloads-library/vicon-camera-software/>

Download the firmware to your PC. Go to the camera's Maintenance screen. Click "Choose a file" to point to the new firmware file and select "Upload":



Alternatively, the Vicon IP Finder utility allows updating multiple cameras at the same time:

