

Graphic Card Test Tool for ViconNet 7.1

General

As the resolutions and frame rates provided by the IP cameras are expected to be displayed by the different computers running ViconNet increase, the need for a high quality video card grows. Computers that are running old hardware and using low end graphic cards might struggle to provide the resources for a good stable display and might perform poorly.

With the release of ViconNet 7.1 and the updated display algorithm added to it, the need for adequate graphic cards is more relevant than even and to allow checking in advance if a certain computer has the right hardware is needed


Qualifying the graphic card

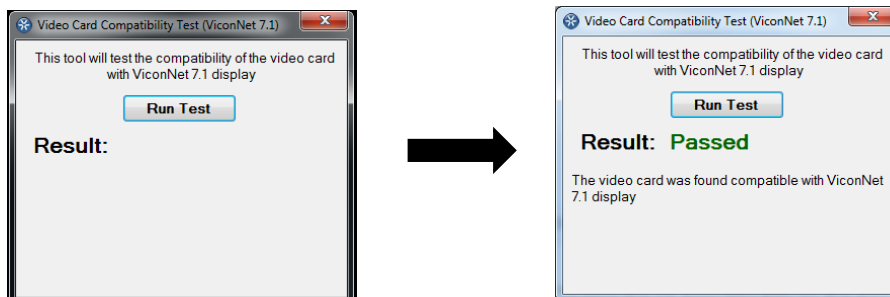
During the process of installing ViconNet or VMDC 7.1 on a computer, the installation will check for the properties of the graphic card and, if they do not meet the required specifications, will inform the user. The check is for specific DirectX functions that the display algorithm utilizes.

Vicon has also released a separate test tool that can be downloaded from the Vicon web site and run on the computer prior to installation. If a user has any doubts about the quality of the display card on the computer or feels it might be old, they can download the test tool, run it and get a result without the need to download and go through the full installation process just to find out the graphic card is not adequate.

DX Tester Tool

- The test tool can be downloaded from the Vicon website <http://www.vicon-security.com/support-technical-support-viconnet-software-downloads.htm>

- Once downloaded, double click the green icon to run the tool 
- The following window will display and the user can click the button to run the test; the result will show on the same window:



- The optional results are:
 - Passed – The video card was found compatible with ViconNet 7.1 display.
 - Partial Support – ViconNet 7.1 will run but display will not use the improved algorithm and video resolution will be seen as prior to the update.
 - Not supported (red) – Card can't support ViconNet 7.1 at all.