



RELEASE NOTES

VALERUS DESKTOP CLIENT BUILD 24.100.70.2615

November 2024

A large, semi-transparent watermark of the VICON logo is centered on the page, rendered in a darker shade of blue than the background.

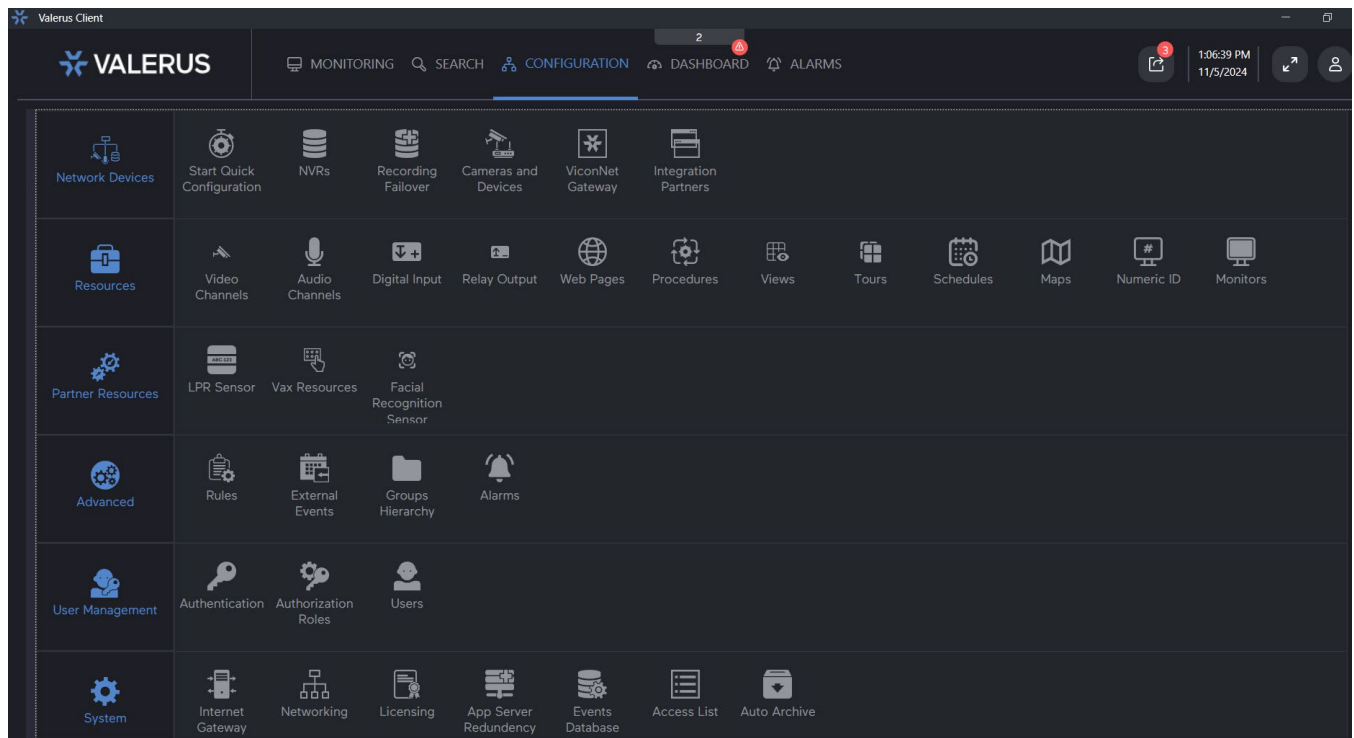
General Description

Vicon is releasing a new Desktop Client application for Valerus VMS. These release notes focus on highlighting feature enhancements, improvements/bug fixes and known issues. Installing this version with a currently installed Valerus VMS instance will not require any new licensing and will not change any system settings.

Feature Enhancements

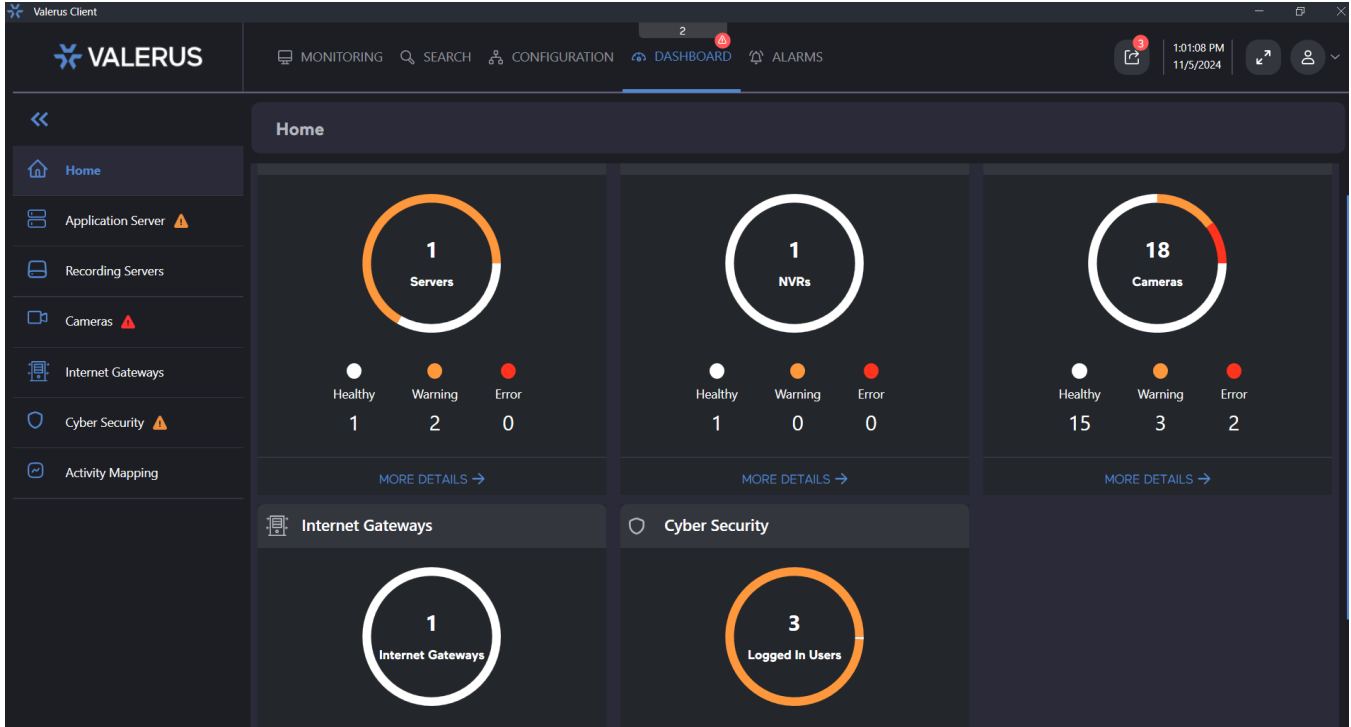
Configuration tab

The Configuration tab has been optimized and bug fixes have been implemented.



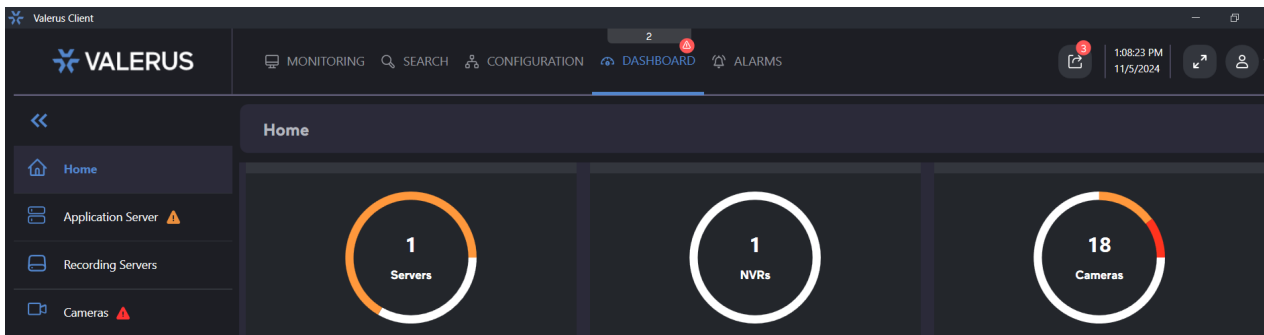
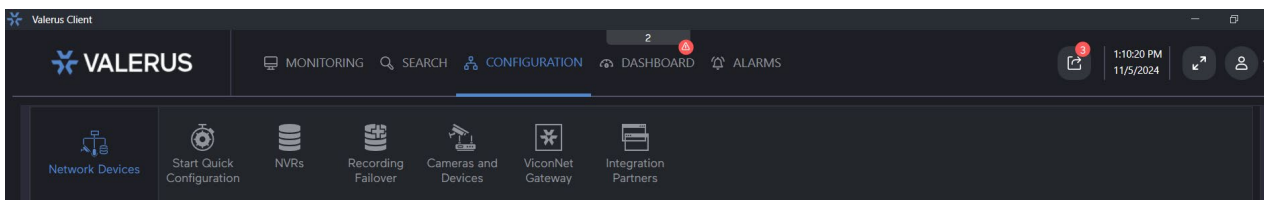
Dashboard tab

The Dashboard tab has been optimized and bug fixes have been implemented.



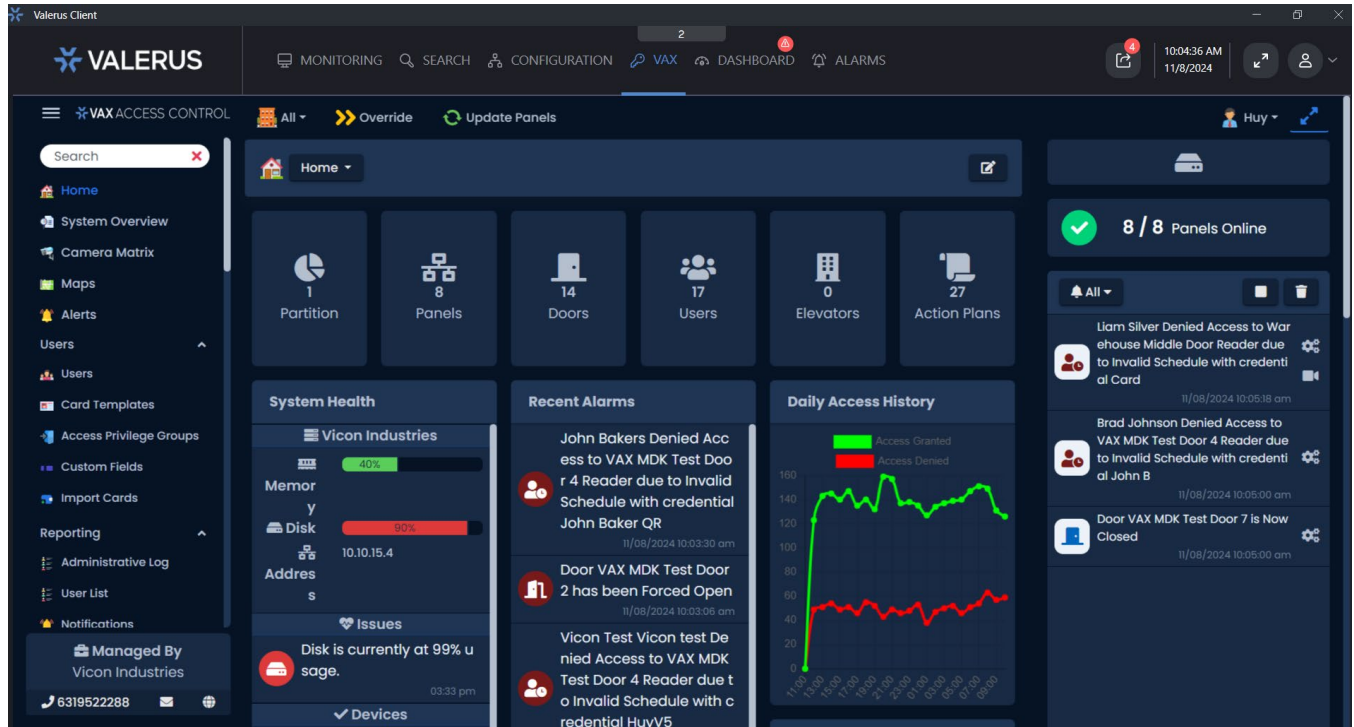
Date and Time Display

Date and time are now displayed on all menus.



VAX tab

VAX tab is now available and can be enabled by going to System Networking menu in the Configuration tab.



Improvements and Fixes in this Version

Cannot export video from Desktop Client using panel toolbar Export icon on the Monitoring page.
User can now select cameras in the Monitoring page and click on the Export icon to get to the Export menu.

Users list does not show under Configuration->User Management->Users menu.
You can now see the Users list under the Configuration->User Management->Users menu.

When opening the Rules menu, the page is blank, not displaying any previously created rules, and Bootstrap error message appears.
Opening the Rules menu now displays all previously created rules, and user can create new rules and save them.

After logging into the Desktop Client application, the Resources tree keeps loading and the resources don't appear.
Resources tree now displays all resources properly after logging into the Desktop Client application.

When a camera that has been assigned a Numeric ID is deleted, the Numeric ID cannot be reassigned to another camera.
The Numeric ID assigned to a camera that has been deleted can now be re-assigned to another camera.

Exported audio is out of synch with exported video.
The issue with handling daylight savings time properly has now been resolved.

Unable to assign or edit space on a network drive.
User now able to assign or edit space on a network drive.

User cannot change specific backup locations to a network drive.
In Configuration tab->Maintenance->Backup, user can now change backup locations to a network drive.

PLC Keypad connected to a Valerus Workstation and selecting a second monitor is unable to control a PTZ camera displayed there.
PLC Keypad can now control a PTZ camera displayed on a second monitor.

When using PLC Keypad to change Valerus layout, unable to switch back to previous layout.
PLC Keypad can now change Valerus layout and switch back to previous layout.

When user selects PLC Serial option under Keypad and PLC setting in User Settings tab, all options are not displaying properly and scroll bar is missing.
All options are now displaying properly.

Known Issues

Unable to add camera manually

If user goes to Configuration tab->Network Devices->Cameras and Devices and clicks “Add Devices Manually” and enters all the information for the new IP camera, after hitting the “Apply” button, the load is displayed continuously. This works properly in the Web Client.

Vicon AI camera analytics rules not triggering

In the Configuration tab->Advanced->Rules menu, if you choose a Vicon AI camera and select an analytic (e.g., motion detection), when that event occurs, the Rules does not trigger. This works properly in the Web Client.

Camera and Devices Report not downloading

In the Configuration tab->Network Devices->Cameras and Devices menu, if you click on Export and choose either xls or html to save a report of your devices, the loader does not stop and you’re unable to download a report. This works properly in the Web Client.

Alarm icon in map

Alarm red dot icon is not displayed on triggering alarm for Resources.

Quick audio playback from map

Mic Playback window is not opening on maps in Monitoring tab when user right clicks on mic icon and tries to do Quick Playback.

Lag on masked video

For Thumbnail and Museum Search, a lag is observed for fisheye cameras that have masks enabled.

Masked video in new standalone player

Masked and protected video exports in standalone player only work for H264 codec; for other codecs, use Web Client to export videos.

Synchronization in new standalone player

Synchronization function when using FF above 4x speed does not work.

Dragged audio synch issue with video

In the Monitoring tab, when video is in synch mode and an audio channel is dragged into a pane, it does not synch with the video.

Rules triggering issue for Custom user

For a Custom user who is authorized for all resources and feature permissions, if there are Rules that are created in the Desktop Client, its action is not displayed. However, if the Rules are created in the Web Client, then the action is displayed in the Desktop Client.

VMDC Monitor display issue with alarms

When an Alarm is triggered on the VMDC Monitor, the layout is not displayed correctly as per the detached monitor.

Misalignment of detached monitors after Alarm or Rule triggers

When an Alarm or Rule triggers and the user moves the detached monitor, the detached window does not properly align.

Digital Input and Relay Output names do not show in maps

When a user hovers their mouse on a Digital Input or Relay Output on a map, it does not display the name of the resource.

Dashboard status for mic

Mics are not displayed in the Storage Distribution list.

Dashboard Health monitoring

The system does not clear the error message from the camera Health Monitoring.

PLC/Keypad support

Camera continuously rotates after exiting PTZ function via VN-KEYPAD joystick.

Allow closing w/o handling feature is not working

In Configuration tab->Advanced->Alarms->"Allow closing w/o handling" feature is not working.

Alarm details not displaying for alarms

If a user creates a new alarm and then clicks the Save button, the alarm properties do not display afterwards.

Limitations

All the features supported by the respective Valerus VMS version will be supported by the Desktop Client with the following limitations in Desktop Client:

- Language translations are partially supported. When a user selects a language other than English, some buttons or menu items may not show the selected language. This will be resolved in a future version.

Pending Feature Implementations

- Valerus ID for Access List
- Mixed Channel Support
- Support for MPEG4 Codec
- Follow Admin Monitor Layout

Availability

The Desktop Client software 24.100.70.2615 is available on Vicon's website. A Quick Guide is provided to outline the installation process.

Note: Desktop Client version 24.100 is only compatible with Valerus 23.400 and 24.100.