

January 2025

## Firmware for the Roughneck and Roughneck AI Camera Series

### General Description

Vicon has released updated firmware for the cameras listed below.

The accompanying PRONTO Device Manager Software V2.20 is available on Vicon's website.

These cameras and firmware versions have been tested and validated with Vicon's Valerus VMS.

Camera	Product Code	Older Firmware	Newest Firmware
V2002B-W313MIR, V2002D-W313MIR, V2002D-W28IR	10554-00, 10553-00, 10555-00	VCAM3LM.01.00.1.6.5840	VCAM3LM.01.00.1.6.7016
V2005D-W313MIR, V2005D-W818MIR, V2005D-W28IRM, V2005D-W28IR, V2005B-W313MIR, V2005B-W818MIR	10553-10, 10575-00, 10555-15, 10555-05, 10554-10, 10576-00	VCAM5L.01.00.0.8.6511	VCAM5L.01.00.0.8.7016
V2008D-W310MIR, V2008D-W818MIR, V2008B-W310MIR, V2008B-W818MIR, V2008-W-NL	10553-15, 10575-10, 10554-15, 10576-10, 10556-00	VCAM5L.01.00.0.12.6511	VCAM5L.01.00.0.12.7016
V2102B-W313MIR, V2105B-W313MIR, V2102B-W28IR, V2105B-W28IR, V2102D-W313MIR, V2105D-W313MIR	10558-05, 10558-25, 10558-00, 10558-20, 10557-00, 10557-10	VCNT.01.00.0.11.6530	VCNT.01.00.0.11.7016
V-CELL-HD-C, V-CELL-HD-CMOD, V2005DNR-W24IR	10578-00, 10578-10, 10579-00	VCAMCV2.01.00.0.17.6513	VCAMCV2.01.00.0.17.7016
V2008B-W310LPR, V2008-WNL-LPR, V2008-W1250-LPR, V2008B-W818LPR, V2008-W0950-LPR	10554-20, 10556-10, 10556-20, 10577-00, CLPR00	VCAM5L.01.00.1.14.6972	VCAM5L.01.00.1.14.7016
V2360W-12-1	10559-05	VCAMCV2.01.00.0.10.6513	VCAMCV2.01.00.0.10.7016

---

V2002D-PTZ	10561-00	VCAM3LM.01.02.1.13.6387	VCAM3LM.01.02.1.13.7016
V2005D-PTZ	10561-10	VCAM5L.01.01.0.15.6525	VCAM5L.01.01.0.15.7016

## Vicon Production

The latest firmware and discovery tool are available on Vicon's website. A link is provided in the installation section of this document. Manufacturing will start using the released firmware for camera production.

Please review the installation instructions described at the end of this document.

## New Features for Roughneck AI Cameras

### Heater Functionality and Time Control

Added heater functionality and time control for applicable bullet cameras.

### Museum Search for ViconNet

Enabled automatic switch to legacy mode when using ViconNet VMS.

## Fixed Issues

### MAC Address Display

MAC address, model number and serial number display correctly.

### ONVIF Service and Camera Reporting for ViconNet

Resolved issues with ONVIF service startup and camera reporting to ViconNet.

### Password Loss on Reboot

Password is not lost after reboot.

### SD Card

Fixed SD card filesystem errors and SD card event handling. Enhanced SD card database for edge recording.

### Displays

Corrected firmware update display.

### Playback

Fixed playback page color legend issues and time alignment in playback.

### Security

Resolved security vulnerabilities (HSTS, ICMP timestamp disclosure).

### Improvements

Improved NTP synchronization, timer settings, and LDAP authentication, as well as ONVIF compatibility, including zoom/AF reporting and memory management.

## Installing the Updated Firmware

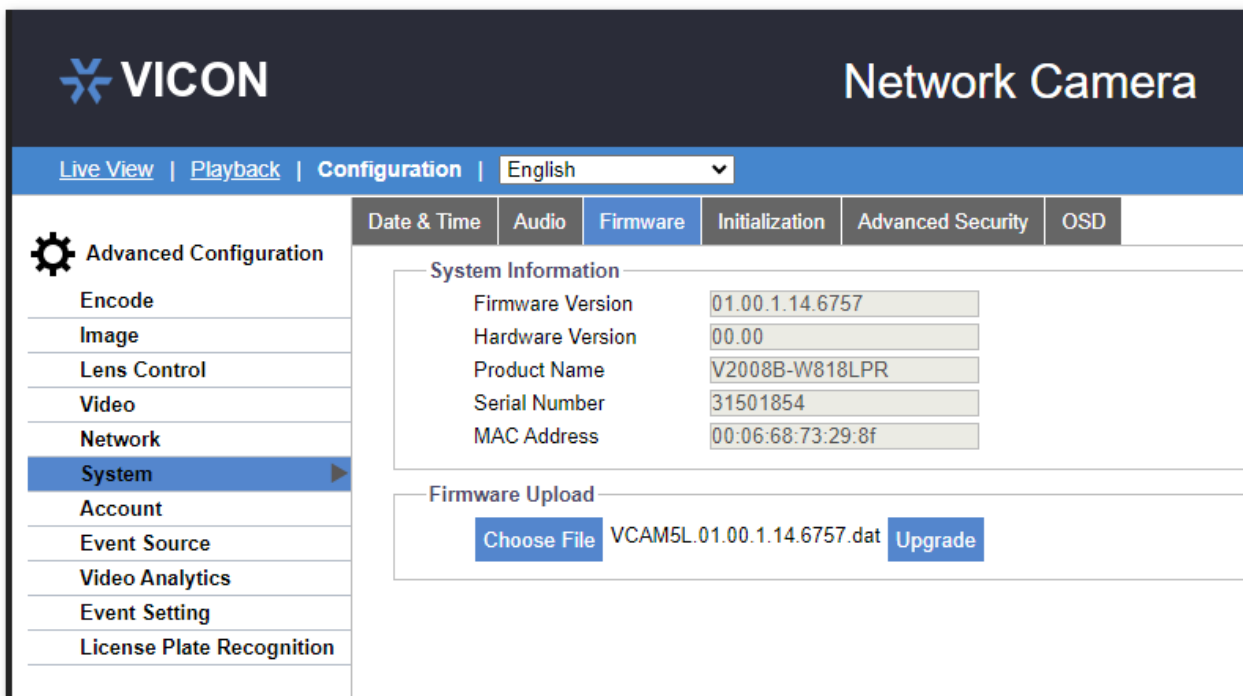
Download the firmware to your PC. Unzip the file.

There are two options to install the new firmware in the camera:

- Using web interface of the camera, uploading the firmware directly into the device.
- With PRONTO Device Manager Software that can be installed on a PC.

### Camera Web Interface

In the camera web interface, under Configuration > System > Firmware, press “Choose File” under “Firmware Upload” and select the downloaded firmware file. Then press “Upgrade” to start the update. The camera will install the update and reboot with the new firmware version:



## Using PRONTO Device Manager Software

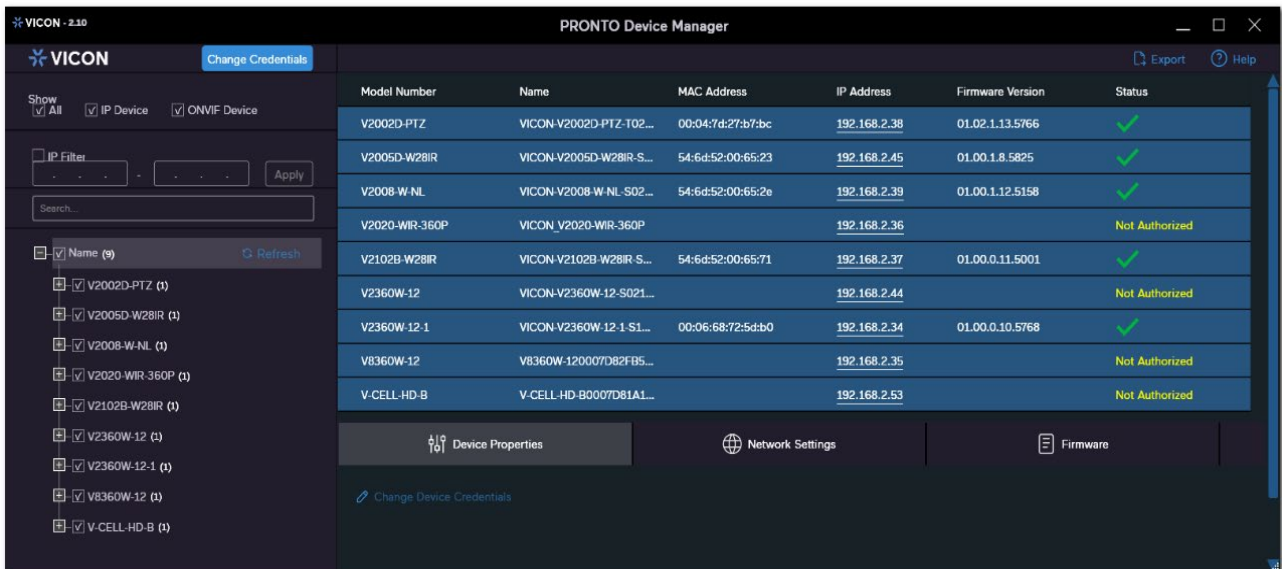
PRONTO is Vicon's device manager tool that can be used to discover all Vicon cameras in a network. This standalone single discovery tool running on a PC, allows users to discover cameras in the network, configure network parameters and update camera firmware (single camera, or in batch).

Pronto Device manager can be downloaded from Vicon's website:

<https://www.vicon-security.com/software-downloads-library/pronto-device-manager-software/>

Pronto Device manager user guide can be found here:

[https://www.vicon-security.com/wp-content/uploads/2022/08/Vicon-Pronto-Device-Manager\\_User-Guide.pdf](https://www.vicon-security.com/wp-content/uploads/2022/08/Vicon-Pronto-Device-Manager_User-Guide.pdf)



To update firmware on one or more cameras:

- Scan the network and find the camera model that needs a firmware update.
- Enter valid credentials for the camera that needs a firmware update.
- Select camera(s). (More cameras can be selected that use the same firmware file.)
- Press the "Upload Firmware File" button; load the new firmware into Pronto.
- Press "Upgrade Device" and select the new firmware file just loaded into Pronto.
- Press Apply. The new firmware is now uploaded to the selected camera(s).
- Allow some time for the camera(s) to reboot after the firmware is uploaded.
- Press "Refresh" and verify the camera(s) are now listed with the new firmware version.