



CAMERA GUIDE

Deter Crime, Collect Evidence, Gain Peace-of-Mind

Vicon's award-winning portfolio of high-quality cameras



VIDEO SURVEILLANCE

Reliable, Clear Video No Matter Your Application

We don't have to convince you about the importance of choosing the right cameras to protect your facility. Environmental and climate conditions, mounting requirements, lighting conditions, application and use cases, privacy considerations...these are just a few of the factors you'll need to consider when picking the right camera for the job. The good news is, Vicon has a camera for that. Over the years we've worked extensively with our customers to understand (and deliver!) exactly what they need in a security camera, no matter their application.

Table Of Contents

| | | |
|---------------------------------|--------------------------------------|--------------------------------|
| 04 Roughneck Series | 06 Roughneck AI Series | 09 Comparison |
| 10 IP Fixed Domes | 11 IP PTZ Cameras | 12 IP Bullet Cameras |
| 13 IP Box Camera | 13 Corner Cameras | 14 LPR Cameras |
| 15 Camera Accessories | 16 Mounting Specifications | |



Click or scan to see the award-winning Multi-Sensor in action





ROUGHNECK CAMERAS

The Roughneck Advantage: NDAA-Compliant and Priced to Compete

Globally, businesses and manufacturers are scrambling to find high-quality cameras to meet strict NDAA regulations. That's why we developed our Roughneck line. These high-performance, NDAA-compliant cameras are the perfect fit for installations that require high-quality, affordable cameras that are not on the banned list.

The Roughneck AI Series

With AI-based analytics onboard

AI-based analytics allow our cameras to distinguish people and vehicles from other objects in a scene. This is referred to as “object classification,” and the camera’s ability to classify those objects (people and vehicles) enables object-based recording and searching. This means Valerus records only when the camera detects the selected type of object in the scene.



Filter out non-relevant video for faster incident resolution



Diminish nuisance motion alarms caused by shadows, swaying trees, etc.



Reduce storage requirements by limiting recording to just object-based motion



Respond to genuine threats quicker, and with fewer resources



Click or scan to see AI in action.



When you're considering a Vicon camera, rest assured...if it's labeled "Roughneck," it's not only NDAA-compliant, it's equipped with a multitude of impressive features.



| Roughneck | Roughneck AI |
|----------------------|---|
| 5 MP | 5 MP, 8 MP, 12 MP, 20 MP and 32 MP |
| IP67 and IK08/IK10 | IP67 and IK10 |
| H.265 Smart Encoding | H.265 Smart Encoding |
| Smart IR | Smart and Adaptive IR |
| Standard Analytics | AI-Based Analytics with Object Classification |
| | Starlight Low-Light Color Images |
| | -40° F / -40° C Operating Temperature |



IP Fixed Domes

IP Fixed Domes

IP PTZ Cameras



AWARD-WINNING

ROUGHNECK AI MULTI-SENSOR

ROUGHNECK AI DOME SERIES

ROUGHNECK AI MICRO DOME SERIES

ROUGHNECK AI 360° PANORAMIC DOME

ROUGHNECK DOME SERIES

ROUGHNECK AI PTZ WITH AUTO-TRACKING

KEY FEATURES

- Four 5 MP or 8 MP sensors, for a total of 20 MP or 32 MP
- NDAA-compliant
- Preconfigured 180°, 270°, and 360° views (or setup customized views)
- Remotely adjust all four sensors in minutes
- H.265/H.264 and M-JPEG compression
- Min. Color Illumination: up to 0.03 lux (20 MP); 0.02 lux (32 MP)
- Temp: -40° to 131° F (-40° to 55° C)
- True WDR
- Motorized zoom and focus lens
- Smart/Adaptive IR illumination: up to 131 ft (40 m)
- Starlight low-light imaging
- Museum Search
- Smart Encoding
- Advanced AI-Based Analytics
- Audio and Alarm input/output
- Powered by PoE++; 24 VDC; 24 VAC
- Two SD card slots for on-camera storage
- IP66; IK10

KEY FEATURES

- 5 MP and 4K (8 MP) models
- NDAA-compliant
- H.265/H.264 and M-JPEG compression
- 3.1-10 mm, 3.6-10 mm, and 8-18 mm lenses available
- Min. Color Illumination: 0.03 lux (5 MP); 0.02 lux (8 MP)
- Temp: -40° to 140 F (-40° to 60° C)
- Dual heaters
- True WDR
- Motorized zoom and focus lens
- Smart/Adaptive IR illumination: 131 ft (40 m)
- Starlight low-light imaging
- Museum Search
- Advanced AI-Based Analytics
- Audio and Alarm input/output
- Powered by PoE; 12 VDC; 24 VAC
- Video composite out
- SD card slot for on-camera storage
- IP67; IK10

KEY FEATURES

- 5 MP model
- NDAA-compliant
- Low-profile, compact design—just 2" high
- H.265/H.264 and M-JPEG compression
- Temp: -22° to 131° F (-30° to 55° C)
- Min. Color Illumination: 0.03 lux
- True WDR
- Fixed 2.8 mm lens
- Smart/Adaptive IR illumination: 49 ft (15 m)
- Starlight low-light imaging
- Museum Search
- Smart Encoding
- Advanced AI-Based Analytics
- Built-in microphone
- Powered by PoE
- SD card slot for on-camera storage
- IP67; IK10

KEY FEATURES

- 12 MP model
- NDAA-compliant
- H.265/H.264 and M-JPEG compression
- Min. Color Illumination: 0.007 lux
- Temp: -40° to 122 F (-40° to 50° C)
- True WDR
- Fisheye lens; 360° panorama at full HD
- Smart IR illumination: 49 ft (15 m)
- Museum Search
- Smart Encoding
- Advanced AI-Based Analytics
- Built-in microphone
- Audio and alarm input/output
- Powered by PoE+; 24 VAC
- SD card slot for on-camera storage
- IP67; IK10

KEY FEATURES

- 5 MP model
- NDAA-compliant
- H.265/H.264 and M-JPEG compression
- 3.1-10 mm lens
- Min. Color Illumination: 0.05 lux
- Temp: -22° to 140° F (-30° to 60° C)
- True WDR
- Motorized zoom and focus lens
- Smart IR: 98 ft (30 m)
- Museum Search
- Smart Encoding
- Powered by PoE; 12 VDC
- SD card slot for on-camera storage
- IP67; IK10

KEY FEATURES

- 8 MP model
- NDAA-compliant
- H.265/H.264 and M-JPEG compression
- Min. Color Illumination: 0.04 lux
- Starlight low-light imaging
- Temp: -40° to 149 F (-40° to 65° C)
- True WDR
- 35X optical zoom, 8X digital zoom
- 6.5-230 mm lens
- Adaptive IR: 1312 ft (400 m)
- PTZ auto-tracking
- Image stabilization
- Speed-dry
- Above-the-horizon viewing
- Museum Search
- Two-way audio
- Alarm input/output
- PoE++; 24 VAC
- IP66; IK10

MODELS

V2020-WIR-360
V2032-WIR-360

MODELS

V2005D-W313MIR
V2005D-W818MIR
V2008D-W310MIR
V2008D-W818MIR

MODEL

V2005D-W28IRM

MODEL

V2360W-12-1

MODEL

V2105D-W313MIR

MODEL

V2008PTZ-IR

IP PTZ Cameras



ROUGHNECK AI PTZ DOME

KEY FEATURES

- 5 MP model
- NDAA-compliant
- H.265/H.264 and M-JPEG compression
- Min. Color Illumination: 0.03 lux
- Starlight low-light imaging
- Temp: -40° to 140° F (-40° to 60° C)
- True WDR
- Advanced AI-Based Analytics
- 5.2-148 mm; 30X optical zoom; 8X digital zoom
- Adaptive/Smart IR (automatic): 492 ft (150 m)
- Museum Search
- Two-way audio
- Alarm input/output
- PoE++; 24 VAC; 48 VDC
- IP66; IK10

MODEL

V2005D-PTZ

IP Bullet Cameras



ROUGHNECK AI BULLET SERIES

KEY FEATURES

- 5 MP and 4K (8 MP) models
- NDAA-compliant
- H.265/H.264 and M-JPEG
- 3.1-10 mm, 3.6-10 mm, and 8-18 mm lenses available
- Min. Color Illumination: 0.03 lux (5 MP); 0.02 lux (8 MP)
- Temp: -40° to 140 F (-40° to 60° C)
- Dual heaters
- True WDR
- Motorized zoom and focus lens
- Smart/Adaptive IR: 131 ft (40 m) range
- Starlight low-light imaging
- Advanced AI-Based Analytics
- Museum Search
- Audio and Alarm input/output
- Powered by PoE+; 12 VDC; 24 VAC
- SD card slot for on-camera storage
- IP67; IK10

MODELS

V2005B-W313MIR
V2005B-W818MIR
V2008B-W310MIR
V2008B-W818MIR



ROUGHNECK BULLET SERIES

KEY FEATURES

- 5 MP model
- NDAA-compliant
- H.265/H.264 and M-JPEG compression
- Min. Color Illumination: 0.05 lux
- Temp: -22° to 140° F (-30° to 60° C)
- Motorized zoom and focus lens
- Smart IR Illumination: 98 ft (30 m)
- Museum Search
- Smart Encoding
- True WDR
- Powered by PoE; 12 VDC
- SD card slot for on-camera storage
- IP67; IK08

MODEL

V2105B-W313MIR

IP Box Camera



ROUGHNECK AI BOX CAMERA

KEY FEATURES

- 4K (8 MP) model
- NDAA-compliant
- H.265/H.264 and M-JPEG compression
- Min. Color Illumination: 0.02 lux
- Temp: 14° to 131° F (-10° to 55° C)
- True WDR
- Starlight low-light imaging
- Museum Search
- Smart Encoding
- Advanced AI-Based Analytics
- Supports megapixel DC iris, P-iris or i-CS lens option
- Built-in ABF button for easy focus
- Alarm and Audio input/output
- Powered by PoE; 12 VDC; 24 VAC
- SD card slot for on-camera storage
- iCS lens, environmental housing, with wall mount, and IR illuminator also available

MODEL

V2008-W-NL

Corner Cameras



ROUGHNECK AI V-CELL CAMERA

KEY FEATURES

- 5 MP
- NDAA-compliant
- Anti-ligature, no grip, tamper-resistant housing
- H.264/H.265 and M-JPEG compression
- Min. Color Illumination: 0.003 lux
- Temp: -4° to 140° F (-20° to 60° C)
- True WDR
- 2.4 mm fixed lens
- Non-visible (940 nm) IR up to 98 ft (30 m)
- Museum Search
- Advanced AI-Based Analytics
- Integrated microphone and speaker
- Alarm and Audio input/output
- Easy to clean stainless steel, water-resistant, corrosion-resistant enclosure
- Camera-only module available for retrofitting into existing V-CELL housing
- Powered by PoE; 12 VDC; 24 VAC
- IP66; IK10

MODELS

V-CELL-HD-C
V-CELL-HD-CMOD



ROUGHNECK AI CORNER MOUNT CAMERA

KEY FEATURES

- 5 MP
- NDAA-compliant
- Tamper-resistant housing
- H.264/H.265 and M-JPEG compression
- Min. Color Illumination: 0.003 lux
- Temp: -4° to 140° F (-20° to 60° C)
- True WDR
- 2.4 mm fixed lens
- Non-visible (940 nm) IR up to 98 ft (30 m)
- Museum Search
- Advanced AI-Based Analytics
- Integrated microphone and speaker
- Alarm and Audio input/output
- Easy to clean aluminum, water-resistant, corrosion-resistant enclosure
- Powered by PoE; 12 VDC
- IP66; IK10; 24 VAC

MODEL

V2005CNR-W24IR

License Plate Recognition Cameras



ROUGHNECK AI LPR BULLET CAMERA

KEY FEATURES

- 4K (8 MP) resolution
- NDAA-compliant
- H.264/H.265 and MJPEG
- 3.6-10 mm and 8-18 mm lenses available
- Min. color illumination: 0.01 lux
- Temp: -40° to 140° F (-40° to 60° C)
- Dual heaters
- True WDR
- Motorized zoom and focus
- Smart/Adaptive IR: 131 ft (40 m)
- Starlight low-light imaging
- LPR software embedded on camera
- Supports license plates from over 70 countries
- Supports customized lists of plates
- Max vehicle speed: 15 mph (20 km/hr)
- Advanced analytics
- Museum Search
- Audio and alarms
- PoE+; 12 VDC; 24 VAC
- SD card slot for on-camera storage
- IP67; IK10

MODELS

V2008B-W310LPR
V2008B-W818LPR



ROUGHNECK AI LPR CAMERA KIT

KEY FEATURES

- Kit includes the camera, iCS lens, housing and IR illuminator
- 4K (8 MP) resolution
- NDAA-compliant
- H.264/H.265 and MJPEG
- Min. color illumination: 0.02 lux
- Temp: -4° to 149° F (-20° to 65° C)
- De-icing window heater and fan
- True WDR
- Remotely adjustable zoom and focus
- IR: 164-459 ft (50-140 m)
- Starlight low-light imaging
- LPR software embedded on camera
- Supports license plates from over 70 countries
- Supports customized lists of plates
- Max vehicle speed: 15 mph (20 km/hr)
- Advanced analytics
- Museum Search
- Audio and alarm input/output
- PoE
- SD card slot for on-camera storage
- IP68; IK10

MODELS

V2008-W0950-LPR



The Big Picture and Plate Details from One Camera

Capture, store, and search on an unlimited number of license plates.

Create lists of license plates that you want to be alerted about when they pull in.

Visually examine details like vehicle color, make and model—as well as the scene surrounding the vehicle—in impressive 8 MP detail.



Camera Accessories

Choose from a variety of additional accessories to augment your surveillance infrastructure.



PoE Port Combiner/Splitter

For customers who want to lower the installation cost of two co-located cameras, or add a second camera to an existing installation, this solution lets you connect any two Roughneck cameras using a single Cat5/6 cable.



Widescreen LED Monitor

The 23.8-inch monitor delivers clear, crisp video via a wide-screen, ideal for multi-camera display. Front panel buttons allow for easy control, with power, video, audio, and external equipment connectors on the rear panel.



Fiber-Optic Media Converters

These converters extend the range of your Ethernet IP network from 328 feet (100 m) to 2 miles (3 km). Available in standalone or rack-mount models, with hot-swappable modules, they require no in-field optical adjustments.

Mounting Specifications

Wall Mounts

SVFT-WM-1 Short Wall Mount

Use this when mounting a variety of domes on a wall.

Contains industry-standard 1.5" NPT pipe thread.



Compatible Cameras

| | |
|-------------|-------------------------------|
| V2000D | Roughneck AI Varifocal Domes* |
| V2100D | Roughneck Varifocal Dome* |
| V2005D | Roughneck AI Micro-Dome* |
| V2360W-12-1 | Roughneck AI Fisheye Dome* |

V1001-WM Medium Wall Mount

Use this when mounting a variety of domes on a wall.

Contains industry-standard 1.5" NPT pipe thread.



| | |
|-------------|-------------------------------|
| V2000D | Roughneck AI Varifocal Domes* |
| V2100D | Roughneck Varifocal Dome* |
| V2005D | Roughneck AI Micro-Domes* |
| V2360W-12-1 | Roughneck AI Fisheye Dome* |
| V2000 | Roughneck AI Multi-Sensors |
| V2005D-PTZ | Roughneck AI PTZ |
| V2008PTZ-IR | Roughneck AI PTZ |

SVFT-UWM-1 Long Wall Mount

Use this when mounting a variety of domes on a wall.

Contains 3/4" conduit access.

Contains industry-standard 1.5" NPT pipe thread.



| | |
|-------------|------------------|
| V2005D-PTZ | Roughneck AI PTZ |
| V2008PTZ-IR | Roughneck AI PTZ |

Parapet Mount

SVFT-UPM-2 Parapet (over-the-roof) Mount

Use this when mounting a variety of domes over the raised barrier at the edge of a roof.

Contains industry-standard 1.5" NPT pipe thread.



| | |
|-------------|-------------------------------|
| V2000D | Roughneck AI Varifocal Domes* |
| V2100D | Roughneck Varifocal Dome* |
| V2360W-12-1 | Roughneck AI Fisheye Dome* |
| V2000 | Roughneck AI Multi-Sensors |
| V2005D-PTZ | Roughneck AI PTZ |
| V2008PTZ-IR | Roughneck AI PTZ |

* Requires compatible Pendant Cap Mount

Pendant Mount

V1001-PM Pendant Mount

Use this when suspending a variety of domes from a ceiling.

Contains industry-standard 1.5" NPT pipe thread.



Ceiling Surface Mounts

SVFT-UCM-1 Ceiling Mount

Use this when mounting a variety of domes directly to a hard ceiling.

Contains industry-standard 1.5" NPT pipe thread.

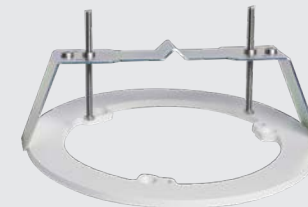


Compatible Cameras

| | |
|-------------|-------------------------------|
| V2000D | Roughneck AI Varifocal Domes* |
| V2100D | Roughneck Varifocal Dome* |
| V2005D | Roughneck AI Micro-Dome* |
| V2360W-12-1 | Roughneck AI Fisheye Dome* |
| V2000 | Roughneck AI Multi-Sensors |
| V2005D-PTZ | Roughneck AI PTZ |
| V2008PTZ-IR | Roughneck AI PTZ |

V2360W-ICH Ceiling Surface Mount

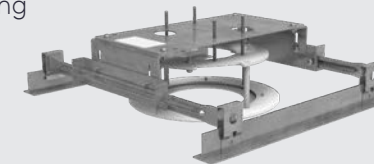
Use this when mounting the V2360W-12-1 Fisheye Dome directly onto a ceiling's surface.



| | |
|-------------|---------------------------|
| V2360W-12-1 | Roughneck AI Fisheye Dome |
|-------------|---------------------------|

V2360W-ICD Drop-Ceiling Surface Mount

Use this when mounting the V2360W-12-1 Fisheye Dome onto the surface of a drop tile ceiling.



| | |
|-------------|---------------------------|
| V2360W-12-1 | Roughneck AI Fisheye Dome |
|-------------|---------------------------|

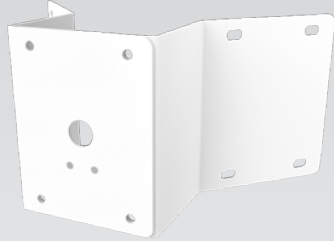
Mounting Specifications

Corner Mount Brackets

NEW

V1001-CM
Corner Mount Bracket

Use this when mounting a variety of domes (on the V1001-WM Wall Mount) to a corner.



| Compatible Cameras | |
|--------------------|------------------------------|
| V2000D | Roughneck AI Varifocal Domes |
| V2100D | Roughneck Varifocal Dome |
| V2005D | Roughneck AI Micro-Dome |
| V2360W-12-1 | Roughneck AI Fisheye Dome |
| V2000 | Roughneck AI Multi-Sensors |
| V2005D-PTZ | Roughneck AI PTZ |
| V2008PTZ-IR | Roughneck AI PTZ |

V-24-CMB-4
Corner Mount Bracket

Use this when mounting PTZs and bullet cameras to a corner.



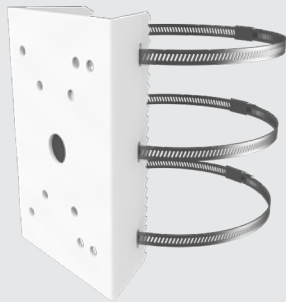
| | |
|-------------|-----------------------------|
| V2005D-PTZ | Roughneck AI PTZ |
| V2008PTZ-IR | Roughneck AI PTZ |
| V2000B | Roughneck AI Bullet Cameras |
| V2100B | Roughneck Bullet Camera |

Pole Mount Brackets

NEW

V1001-PL
Pole Mount Bracket

Use this when mounting a variety of domes (on the V1001-WM Wall Mount) to a pole.



| | |
|-------------|------------------------------|
| V2000D | Roughneck AI Varifocal Domes |
| V2100D | Roughneck Varifocal Dome |
| V2005D | Roughneck AI Micro-Dome |
| V2360W-12-1 | Roughneck AI Fisheye Dome |
| V2000 | Roughneck AI Multi-Sensors |
| V2005D-PTZ | Roughneck AI PTZ |
| V2008PTZ-IR | Roughneck AI PTZ |

V-20B-A-4
Pole Mount Bracket

Use this when mounting PTZs and bullet cameras to a corner.



| | |
|-------------|-----------------------------|
| V2005D-PTZ | Roughneck AI PTZ |
| V2008PTZ-IR | Roughneck AI PTZ |
| V2000B | Roughneck AI Bullet Cameras |
| V2100B | Roughneck Bullet Camera |

Junction Box

NEW

V1001-JB
Junction Box

This assists with wiring management for a variety of domes, which easily mount to this J-Box.



| Compatible Cameras | |
|--------------------|------------------------------|
| V2000D | Roughneck AI Varifocal Domes |
| V2100D | Roughneck Varifocal Dome |
| V2005D | Roughneck AI Micro-Dome |
| V2360W-12-1 | Roughneck AI Fisheye Dome |
| V2000 | Roughneck AI Multi-Sensors |
| V2005D-PTZ | Roughneck AI PTZ |
| V2008PTZ-IR | Roughneck AI PTZ |

Pendant Caps

V2XXXD-PM
Pendant Cap

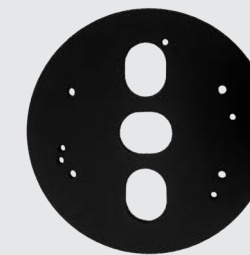
Use this when mounting various domes to industry-standard 1.5" NPT mounts.



| | |
|--------|---|
| V2000D | Roughneck AI Varifocal Domes |
| V2005D | Roughneck AI Micro-Dome (requires the V2XXXD-ADPT adaptor) |
| V2100D | Roughneck Varifocal Dome |

V2XXXD-ADPT
Pendant Cap Adaptor

This adaptor is required when mounting the V2005D Micro-Dome to the V2XXXD-PM Pendant Cap.



| | |
|--------|-------------------------|
| V2005D | Roughneck AI Micro-Dome |
|--------|-------------------------|

V2000D-PM
Pendant Cap

Use this when mounting the V2360W-12-1 Fisheye Dome to industry-standard 1.5" NPT mounts.



| | |
|-------------|---------------------------|
| V2360W-12-1 | Roughneck AI Fisheye Dome |
|-------------|---------------------------|

Mounting Specifications

In-Ceiling Mounts

NEW

V2000D-IC In-Ceiling Mount

Use this when recessing the V2000D Fixed Domes into a ceiling. Drop ceiling applications may also require the V2XXXD-DCB Drop Ceiling Bracket for additional support.



Compatible Cameras

V2000D Roughneck AI Varifocal Domes

NEW

V2100D-IC In-Ceiling Mount

Use this when recessing the V2100D Fixed Domes into a ceiling. Drop-ceiling applications may also require the V2XXXD-DCB Drop Ceiling Bracket for additional support.



V2100D Roughneck Varifocal Dome

NEW

V2XXXD-DCB Drop Ceiling Support Bracket

Use this to provide extra support when recessing the V2000D and V2100D Fixed Domes into a drop ceiling.

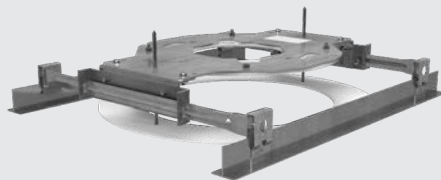


V2000D Roughneck AI Varifocal Domes

V2100D Roughneck Varifocal Dome

V2000-360-ICD In-Ceiling Mount

Use this when recessing the V2000 Multi-Sensors into a ceiling.



V2000 Roughneck AI Multi-Sensors

Backbox Mounts

V2100D-BOX Backbox Mount

Use this when you need to protect the V2100D Fixed Dome's cables from the elements, vandalism, etc.



Compatible Cameras

V2100D Roughneck Varifocal Dome

V2000D-MICRO-BOX Backbox Mount

Use this when you need to protect the V2005D Micro-Dome's cables from the elements, vandalism, etc.



V2005D Roughneck AI Micro-Dome

V2000B-BOX Backbox Mount

Use this when you need to protect the Bullet Camera or Fisheye Dome cables from the elements, vandalism, etc.



V2360W-12-1 Roughneck AI Fisheye Dome
V2000B Roughneck AI Bullet Cameras

V2100B-BOX Backbox Mount

Use this when you need to protect the V2100B Bullet Camera cables from the elements, vandalism, etc.



V2100B Roughneck Bullet Camera

Mounting Specifications

Wedge Mount

V2XXX-WDG
Wedge Mount

Use this when various domes need to be surface-mounted on an angle to achieve the correct field-of-view.



Compatible Cameras

V2360W-12-1 Roughneck AI Fisheye Dome

V2005D Roughneck AI Micro-Dome

Electrical Box Mounting Plates

V2000D-PLATE
Electrical Box
Mounting Plate

Use this when mounting the V2000D Dome to a 4x4 electrical box.



V2000D Roughneck AI Varifocal Domes

V2100D-PLATE
Electrical Box
Mounting Plate

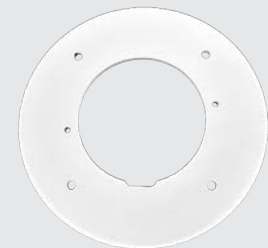
Use this when mounting the V2100D Fixed Dome to a 4x4 electrical box.



V2100D Roughneck Varifocal Dome

V2000D-MICRO-PLATE
Electrical Box
Mounting Plate

Use this when mounting the V2005D Micro-Dome to a 4x4 electrical box.



V2005D Roughneck AI Micro-Dome

Compatible Cameras

V2360W-12-1 Roughneck AI Fisheye Dome

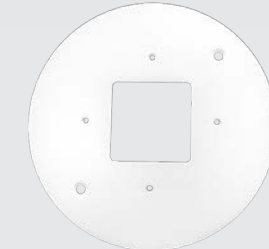
V2360-PLATE
Electrical Box
Mounting Plate

Use this when mounting the V2360W-12-1 Fisheye Dome to a 4x4 electrical box.



V2XXX-WDG-PLATE
Electrical Box
Mounting Plate

Use this when mounting the V2XXX-WDG Wedge Mount to a 4x4 electrical box.

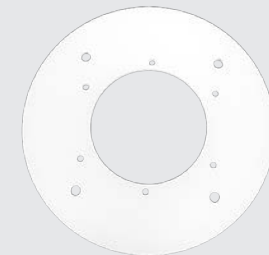


V2360W-12-1 Roughneck AI Fisheye Dome

V2005D Roughneck AI Micro-Dome

V2000B-PLATE
Electrical Box
Mounting Plate

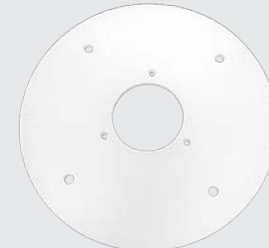
Use this when mounting the V2000B Bullet Cameras to a 4x4 electrical box.



V2000B Roughneck AI Bullet Cameras

V2100B-PLATE
Electrical Box
Mounting Plate

Use this when mounting the V2100B Bullet Camera to a 4x4 electrical box.



V2100B Roughneck Bullet Camera

For detailed information on Vicon's mounting applications and specifications, please refer to the **Mounting Guide**.



If you're a decision maker in your business, and you're ready to learn more about our end-to-end solutions, we invite you to contact your local Vicon Integrator or contact a Vicon Sales Rep directly.

Corporate Headquarters

Vicon Industries Inc.
Tel: 631.952.2288
Toll-Free Sales: +1.800.645.9116
Email: sales@vicon-security.com

European Headquarters

Vicon Industries Limited
Tel: +44 1489 566300
Sales: +44 1489 566310
Email: uksales@vicon-security.com



Vicon, Roughneck and their logos are registered trademarks and Vicon Valerus, VAX and their logos are trademarks of Vicon Industries Inc. Product specifications are subject to change without notice. Copyright ©2024 Vicon Industries. All rights reserved. Vicon part number 8015-5329-31 Rev 00. All other trademarks used in this publication are the property of their owners.

vicon-security.com