


ANAVIO

DOME CAMERA

**5 MP or 8 MP (4K) resolution
and AI-based analytics**

Securely access this cloud-managed dome from anywhere and from any device. It features onboard analytics and built-in IR, and you can take advantage of new features via automatic updates.



GSA  NDAA  TAA



OVERCOME HARSH LIGHTING

Counteract the many lighting challenges that can exist in a scene, like intense backlighting, shadows and reflective glare from windows and floors.



WEATHER-RESISTANT

The rugged housing protects the camera from severe weather conditions, extreme temperatures, high humidity, dust, and water (and snowballs!).



TAMPER-PROOF

The housing contains vandal-proof and impact-resistant components, and is equipped with the highest impact rating available.



SEE IN THE DARK

Starlight low-light technology lets you see colors in the dark. Plus, the camera's integrated IR gives you high-quality video—even in total darkness—from up to 131 ft (40 m) away.



MONITOR REAL-TIME EVENTS

The camera can detect motion triggered by a person and/or vehicle vs. motion triggered by things like blowing leaves, so you can respond to genuine threats quicker.



FASTER INVESTIGATIONS

Object-based motion detection lets you filter out non-relevant video for faster incident resolution, and also reduces storage requirements.



THIS INTELLIGENT, DURABLE CAMERA OFFERS A NUMBER OF ADVANTAGES



Lens ensures objects close to AND far away stay in focus simultaneously



Starlight low-light technology provides color images in dark scenes



5 MP or 8 MP (4K) HD resolution for a crystal-clear picture



A variety of brackets to meet your unique mounting application



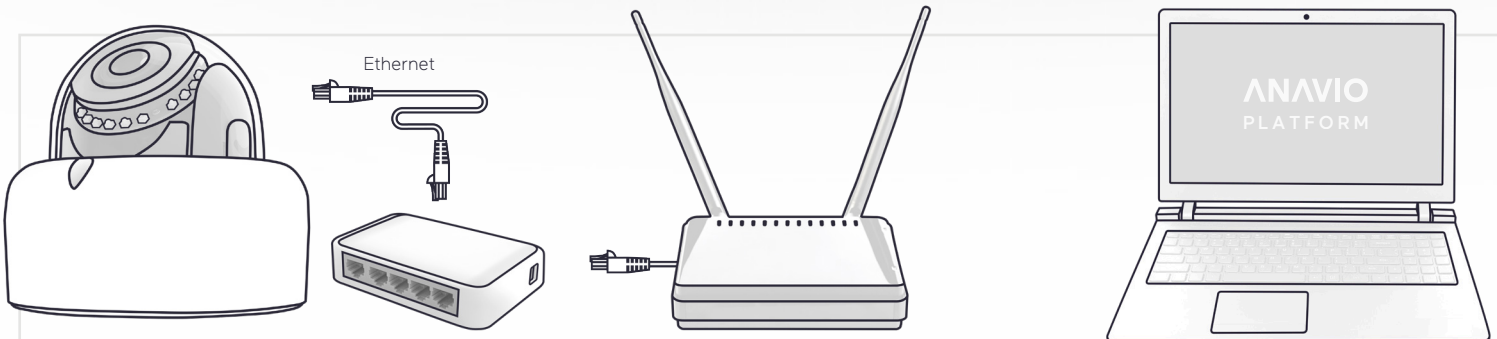
Store video on the camera for up to 60 days



Uses just a single Ethernet PoE connection



HERE'S HOW IT COMES TOGETHER



Install your dome and plug it into a PoE switch to power it up.

Connect the PoE switch to your router so you can access your dome via the cloud.

Your new dome is up and running and you'll see it in your Anavio portal.

MOUNTING OPTIONS



V2000D-PLATE
4x4 electrical box
mounting plate



V2000D-ICD
Drop ceiling mount



V2000D-ICH
Hard ceiling mount



V2XXXD-PM
Pendant Cap with
sunshield



V1001-WM
Medium wall mount



V1001-PM
Pendant mount



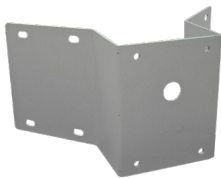
SVFT-UPM-2
Parapet mount



SVFT-UCM-1
Universal ceiling mount



SVFT-UWM-1
Long wall mount



Corner Mount
V1001-CM



Pole Mount
V1001-PM



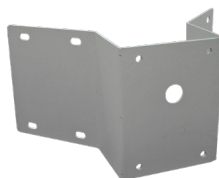
Junction Box
V1001-JB



V-24CMB-4
Corner mount



V-20B-A-4
Pole mount



Corner Mount
V1001-CM



Pole Mount
V1001-PM

SPECIFICATIONS

CAMERA

Image Sensor

5 MP: 1/2.8 in.

8 MP: 1/1.8 in.

Max Resolution

5 MP: 2592x1944

8 MP: 3840x2160

AI-Based Object

Classification Analytics

Vehicles, people, animals

Electronic Shutter Speed

Auto (1/2 ~ 1/10,000 sec)

Day/Night Performance

True day/night (IR cut filter)

Wide Dynamic Range

True WDR; 120 dB

Minimum Illumination (@ 30 IRE)

5 MP:

Color:

0.03 lux

BW:

IR Off: 0.01 lux

IR On: 0 lux

8 MP:

Color:

0.02 lux

BW:

IR Off: 0.01 lux

IR On: 0 lux

IR Distance

Smart IR/Adaptive IR;

131 ft (40 m)

LENSES

Focal Length

5 MP:

3.1-10 mm with 3.2X optical zoom

8 MP:

3.6-10 mm with 2.8X optical zoom

Max. Aperture

5 MP: f/1.4 - f/2.8

8 MP: f/1.5 - f/2.8

Iris

P-iris

Zoom/Focus Adjust

Motorized zoom and focus

Field-of-View

5 MP:

H: 32° (tele) - 96° (wide)

V: 24° (tele) - 69° (wide)

8 MP:

H: 46° (tele) - 98° (wide)

V: 26° (tele) - 54° (wide)

MECHANICAL

Construction

Dome body: White aluminum

Dome bubble: Polycarbonate

Camera Angle of Adjustment

3-axis adjustment: Pan: 370°;

Tilt: 15° - 90°; Rotate: ±355°

Dimensions (HxD)

4.49 in. (125 mm) x 5.3 in. (135 mm)

Weight

2.6 lb (1.2 kg)

VIDEO TRANSMISSION

Network

10/100Base-T/TX: RJ-45

Image Compression

H.264

Resolution

5 MP:

High Quality: 2592x1944 (1500 Kbps)

Standard Quality: 720x544 (300 Kbps)

8 MP:

High Quality: 3840x2160 (3000 Kbps)

Standard Quality: 1280x720 (600 Kbps)

Frame Rate

24 fps

Alarms

1 alarm input/1 alarm output

Audio

1 audio input/1 audio output

SPECIFICATIONS

ELECTRICAL

Input Power

PoE IEEE 802.3af class 3; 12 VDC ($\pm 10\%$); 24 VAC (+20%/-10%)

Power Consumption

IR On/Heaters On:

5 MP: 16.5 W

8 MP: 16.5 W

IR Off/Heaters On:

5 MP: 14.1 W

8 MP: 14.1 W

IR Off/Heaters Off:

5 MP: 6 W

8 MP: 6 W

CONTROLS + CONNECTORS

Connectors

Internal cable termination; 3/4" conduit access holes provided, side and bottom

Power

12 VDC/24 VAC: Terminal block

PoE/Network

RJ-45 CAT5

Alarm

Terminal block

Audio

Terminal block

Micro SD card slot

SDHC/SDXC card included
(512 GB for 5 MP; 1 TB for 8 MP)

ENVIRONMENTAL

Dual Heater System

For low temperature operation:
Heater turns on at -40°F (-40°C)
and off at 59°F (15°C)

For defog operation:

Heater turns on at -40°F (-40°C)
and off at 140°F (60°C)

Operating Conditions

Temperature: -40° to 140°F
(-40° to 60°C)

Humidity: Up to 90%, non-condensing

REGULATORY

Approvals

UL, CE/FCC Class A, IP67, IK10, RoHS

Certifications

NDAA, GSA, TAA

Country of Origin

Taiwan

Warranty

5 years



ORDERING INFORMATION

CAMERAS

VA-DVF05A-512
5 MP Dome with 512 GB storage

VA-DVF08A-1TB
8 MP Dome with 1 TB storage

CAMERA CONNECTION LICENSES

VA-CLIC1Y
1-Year Camera License

VA-CLIC3Y
3-Year Camera License

VA-CLIC5Y
5-Year Camera License

ACCESSORIES

V-POE-CS2
Combiner/Splitter for co-locating
any two Anavio cameras

Please contact your Vicon sales representative for more information.



Vicon Data Sheet Number: 8009-7336-00-01

Specifications subject to change without notice.
Vicon and their logos are registered trademarks of Vicon Industries Inc.
Copyright © 2025 Vicon Industries Inc. All rights reserved.

